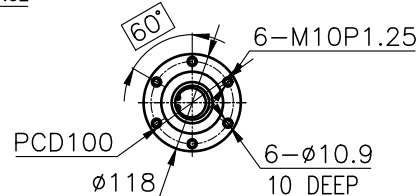
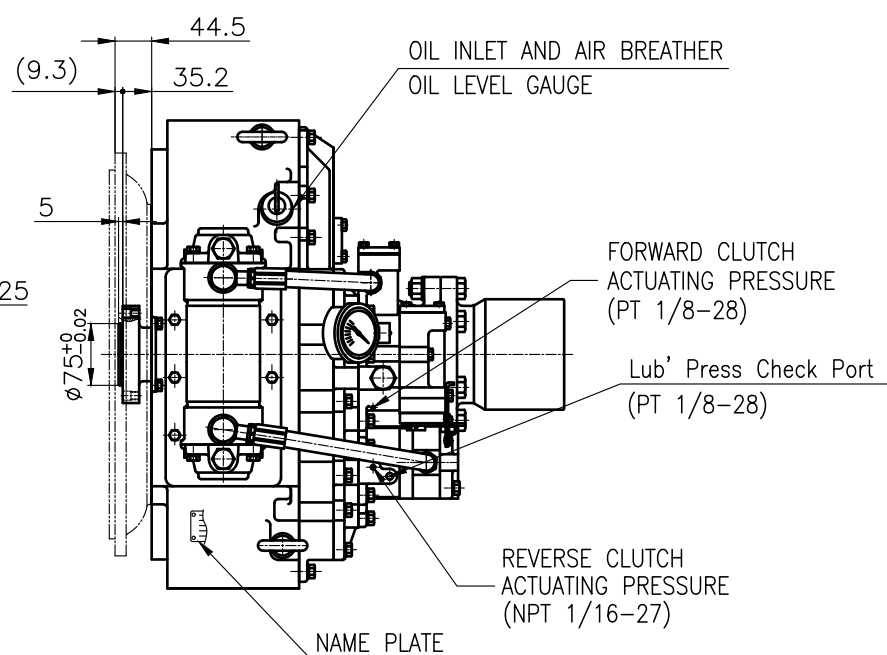


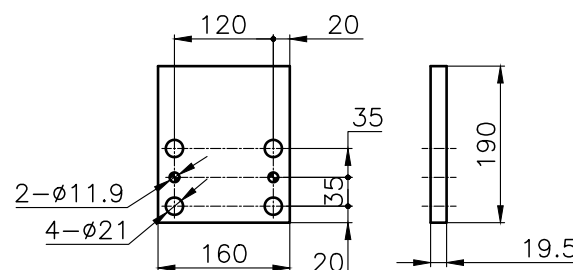
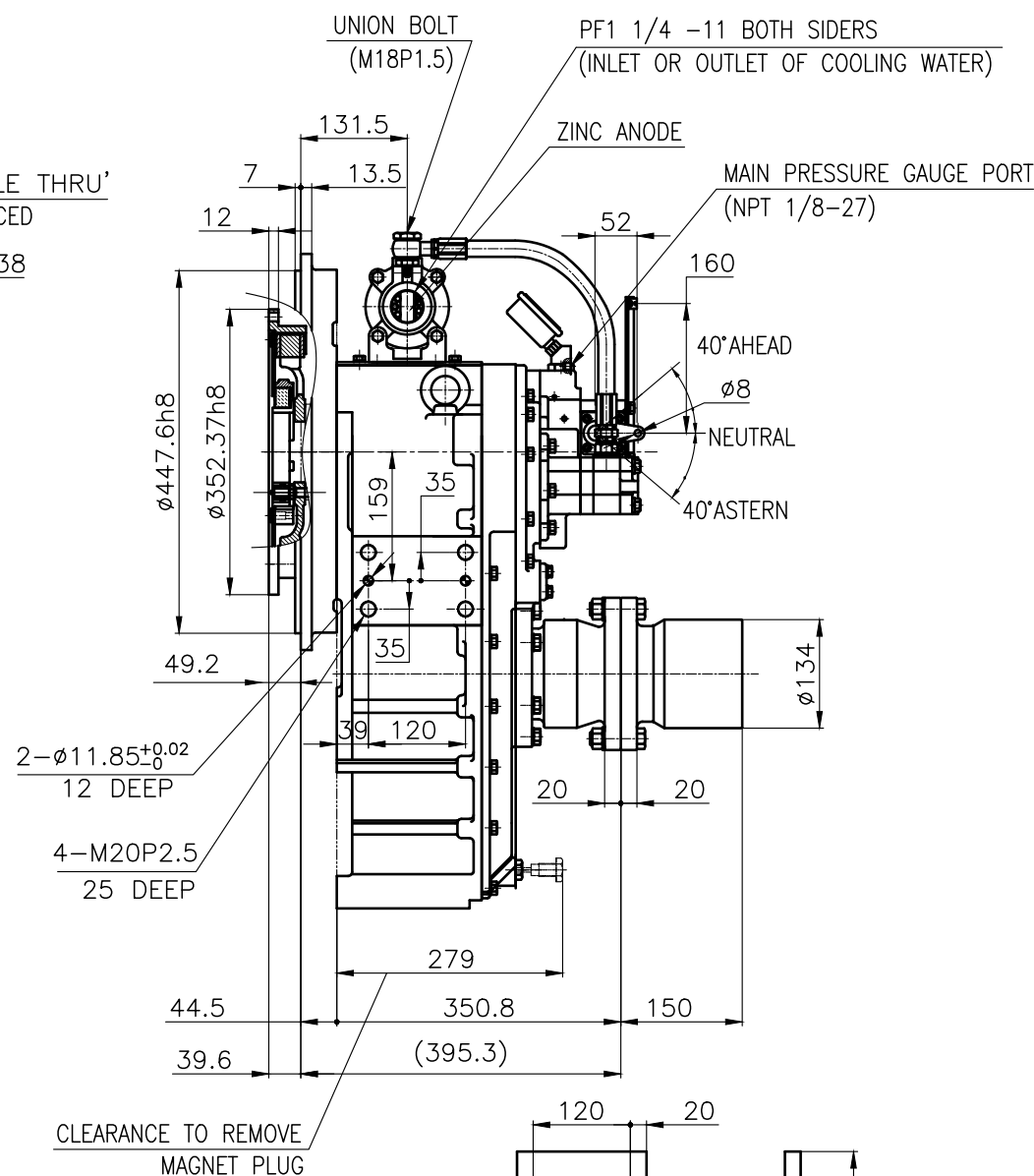
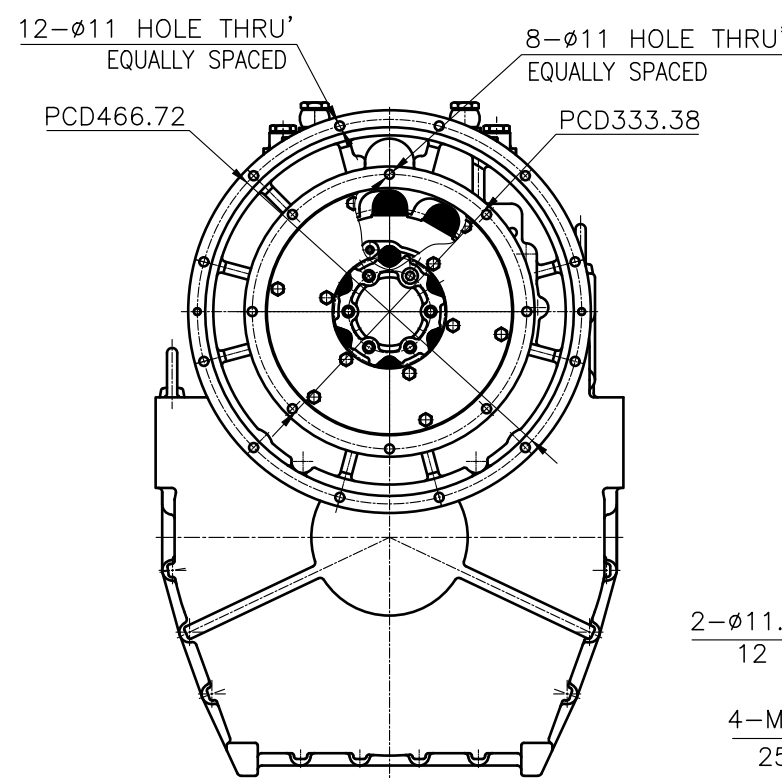
OUTPUT SHAFT COUPLING & PROPELLER COUPLING DIMENSION



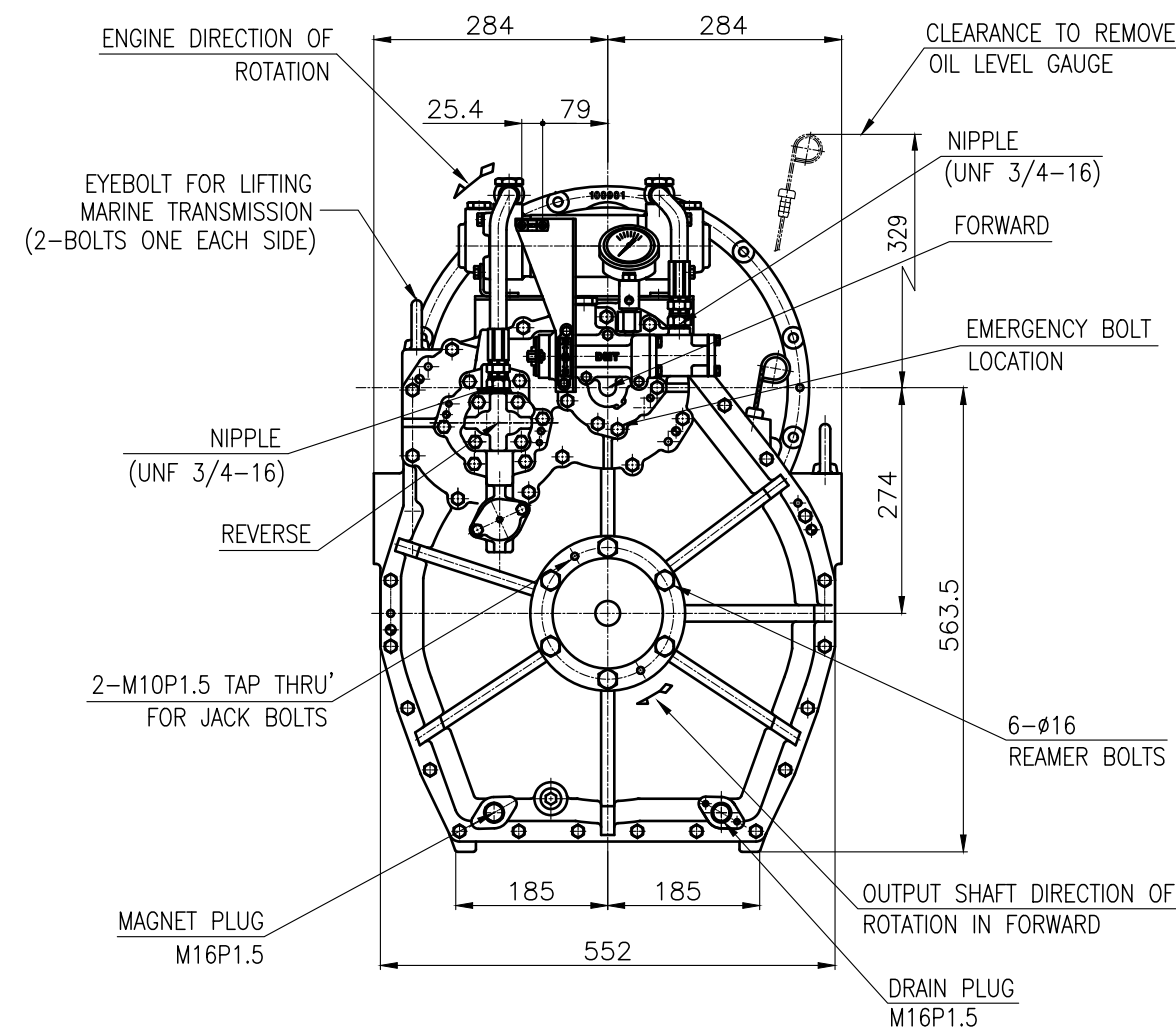
INPUT COUPLING DIMENSION



DMT 100HL MARINE TRANSMISSION SPECIFICATION			
GEAR RATIO	5.29, 5.95, 4.07, 4.50, 4.95		
TOTAL WEIGHT	APPROX. 263 kg(DRY)		
OIL CAPACITY	APPROX. 9.5L		
OIL VISCOSITY	SAE # 30		
OIL PRESSURE	1.96 ~ 2.54 MPa	CLUTCH OIL	
DIRECTION OF ROTATION IN FORWARD	INPUT	C.C.W VIEWED FROM THE STERN	
	OUTPUT	C.W VIEWED FROM THE STERN	
OIL CHANGE INTERVAL	THE FIRST 100HOURS OF INITIAL OPERATION		
	AND EVERY 1000HOURS THEREAFTER		
SHIFTING LIMIT	UNDER 50% OF THE RATED ENGINE SPEED		
OIL COOLER	WATER FLOW 40 ~ 60L/min		
	TEMPERATURE OF COOLING WATER		MAX 32°
OPERATING TORQUE OF SHIFTING LEVER			UNDER 2.94Nm



BRACKET DIMENSION



REMARK (HOT)
1.HOUSING: SAE#2
2.DRIVING RING: SAE 11.5"
3.COUPLING TYPE : DUAL STAGE
4.APPLICATION ENGINE : STANDARD

公差公差 TOLERANCE ON					번호 NO.	품 PART NO.	품 PART NAME 명		개수 Q'TY	재 질 MATERIAL	규 SIZE	비 REMARKS	
분수 소수 각도 FRACTIONS DECIMALS ANGLES													원도 번호 ORIGINAL DWG. NO.
± ± ±													
公差公差 TOLERANCE ON													
구경 조급 종급 정급													
1 초과 4 이하 ± 0.3 ± 0.1 ± 0.05													
4 16 ± 0.5 ± 0.2 ± 0.07													
16 63 ± 0.7 ± 0.3 ± 0.1													
63 250 ± 1.2 ± 0.5 ± 0.2													
250 1000 ± 2.0 ± 0.8 ± 0.3													
										</			