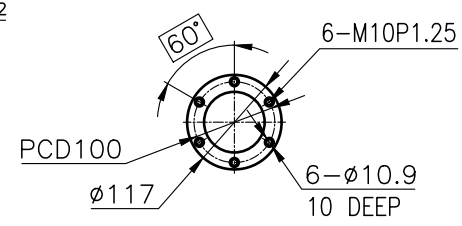
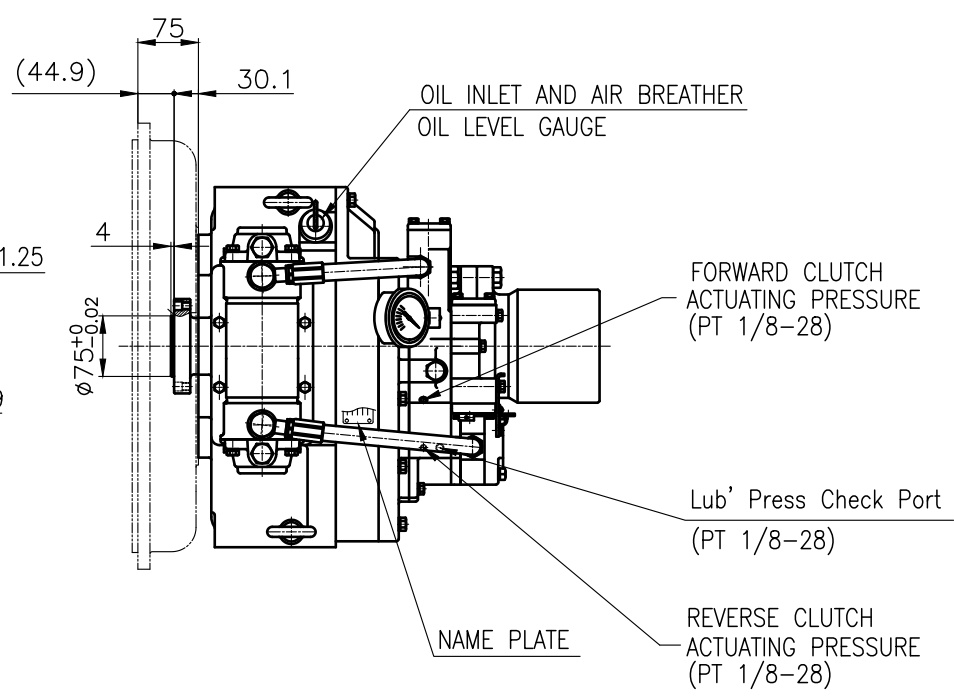


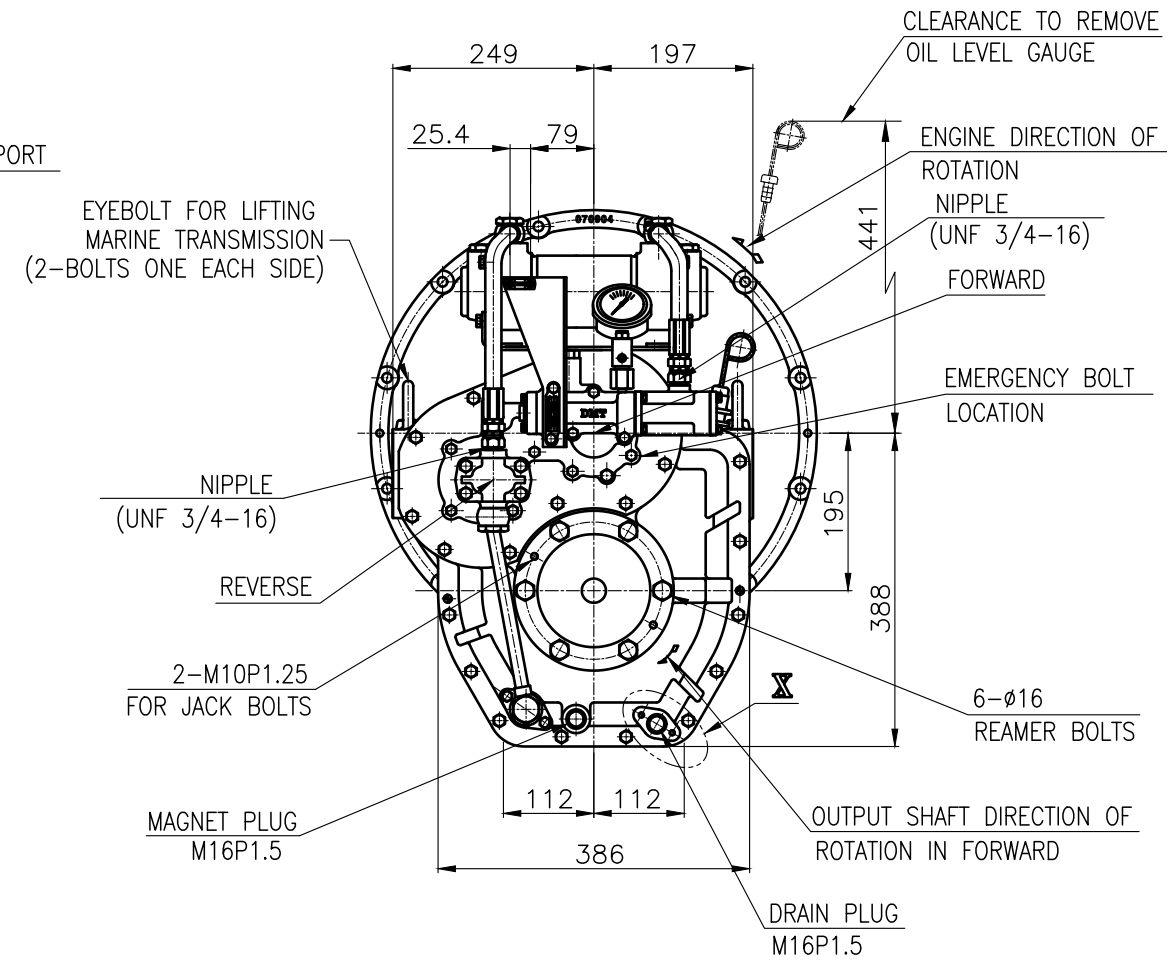
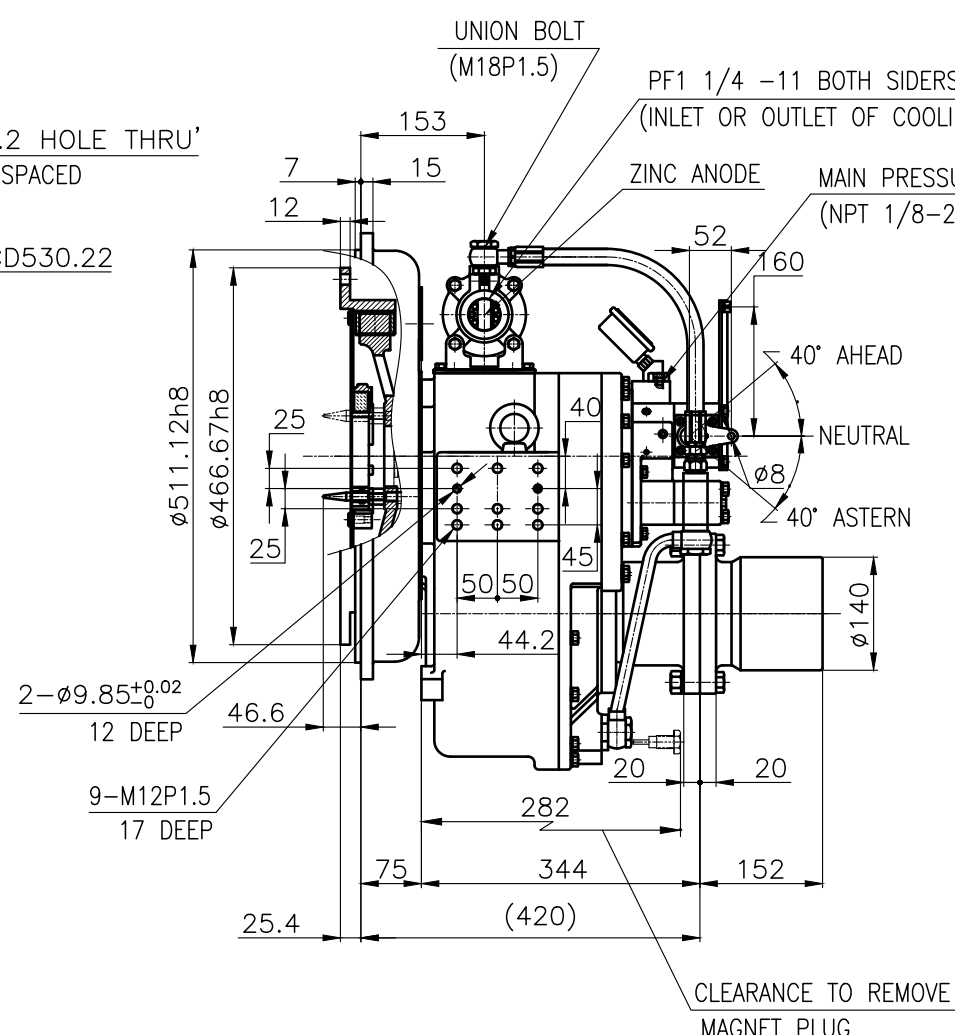
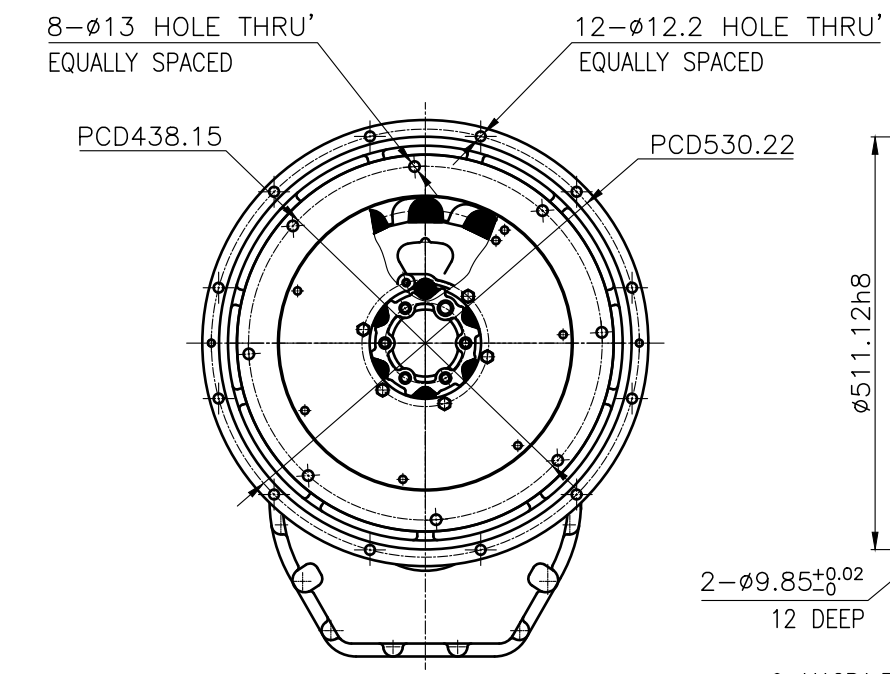
OUTPUT SHAFT COUPLING & PROPELLER COUPLING DIMENSION



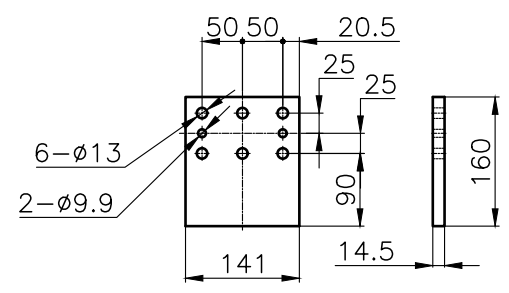
INPUT COUPLING DIMENSION



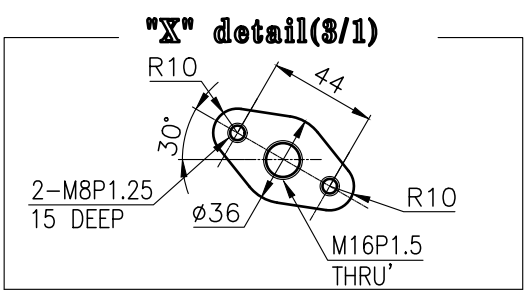
DMT 140H MARINE TRANSMISSION SPECIFICATION			
GEAR RATIO	1.97, 2.57, 3.03, 3.46		
TOTAL WEIGHT	APPROX. 250 kg(DRY)		
OIL CAPACITY	APPROX. 4 L		
OIL VISCOSITY	SAE # 30		
OIL PRESSURE	1.96 ~ 2.54 MPa		CLUTCH OIL
DIRECTION OF ROTATION IN FORWARD	INPUT	C.C.W VIEWED FROM THE STERN	
	OUTPUT	C.W VIEWED FROM THE STERN	
OIL CHANGE INTERVAL	THE FIRST 100HOURS OF INITIAL OPERATION		
	AND EVERY 1000HOURS THEREAFTER		
SHIFTING LIMIT	UNDER 50% OF THE RATED ENGINE SPEED		
OIL COOLER	WATER FLOW 40 ~ 60L/min		
	TEMPERATURE OF COOLING WATER		MAX 32°C
OPERATING TORQUE OF SHIFTING LEVER			UNDER 2.94Nm





REMARK (HOT)
1.HOUSING: SAE#1
2.DRIVING RING: SAE 14"
3.COUPLING TYPE : DUAL STAGE
4.APPLICATION ENGINE : STANDARD



BRACKET DIMENSION



"X" detail(3/1)

공 동 공 차 TOLERANCE ON					번호 NO.	품 PART NO.	품 PART NAME	개 수 Q'TY	재 MATERIAL	규 SIZE	비 고 REMARKS	
분 數 FRACTIONS	소 수 DECIMALS	각 도 ANGLES	± _____	± _____	± _____	재 MATERIAL			형 식 TYPE	DMT140H	원 도 번 ORIGINAL DWG. NO.	
일	구 분	조 급	중 급	정 급		작 성 DATE 2018.06.20	척 도 SCALE N/S	품 명 NAME	MARINE TRANSMISSION			
												승 인 APPROVED BY
반	1 초과 4 이하	± 0.3	± 0.1	± 0.05	JK.Kim	TH.Cha	BJ.Moon	도 DWG. NO.	14000GA~D-114DCH		개정 (REV.) 000	
	4	16	± 0.5	± 0.2								± 0.07
평	16	63	± 0.7	± 0.3	± 0.1							
	63	250	± 1.2	± 0.5	± 0.2							
차	250	1000	± 2.0	± 0.8	± 0.3							
					 D-I INDUSTRIAL				크 기 SIZE	A 3	코-드 번 호 CODE ID. NO.	

6

7

8

SHEET 1 OF 1