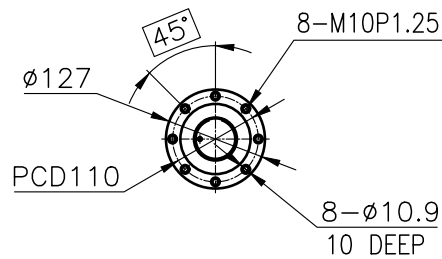
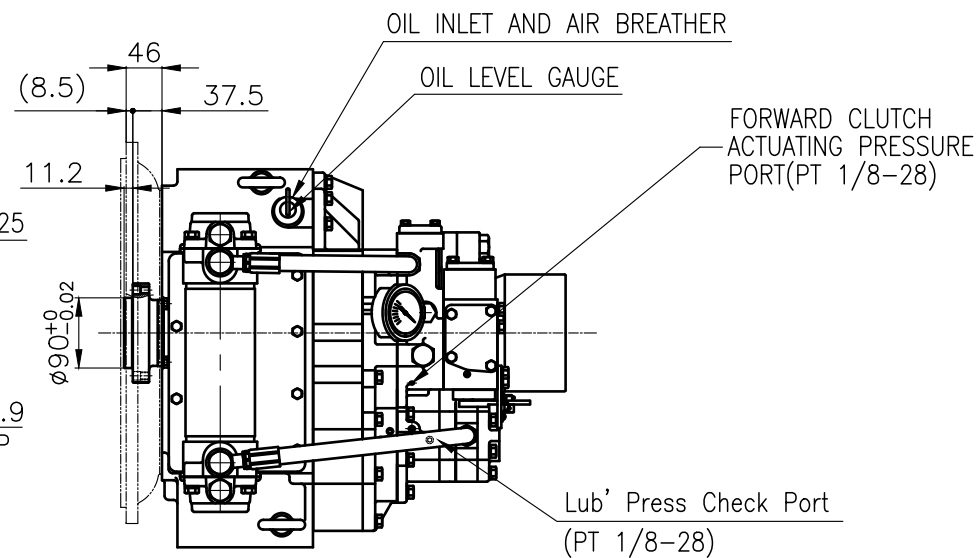


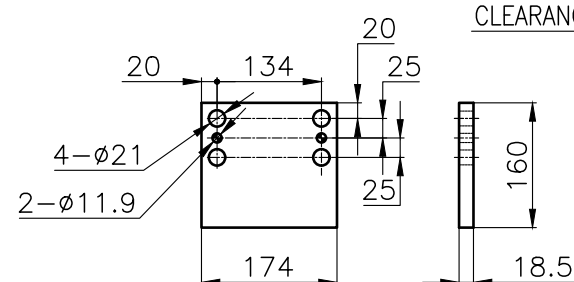
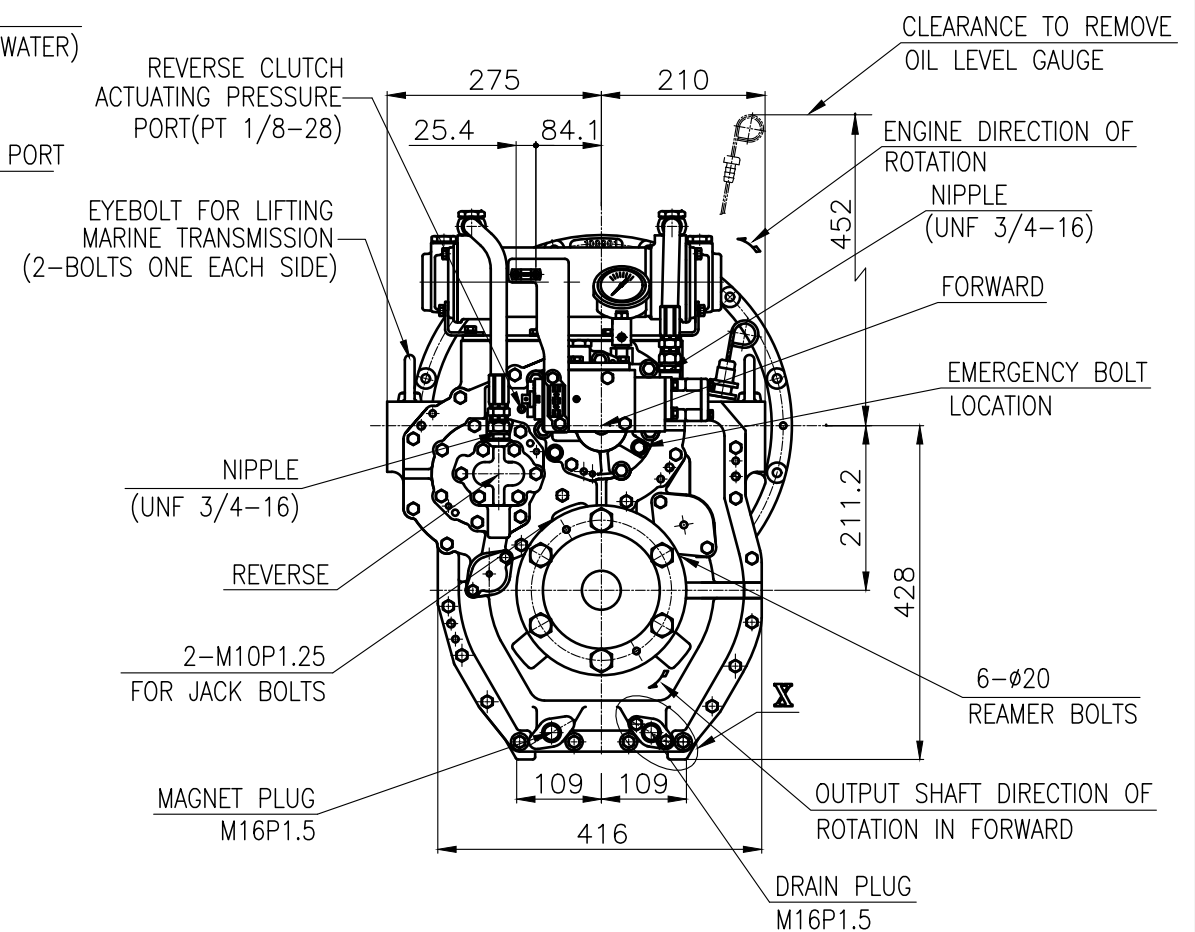
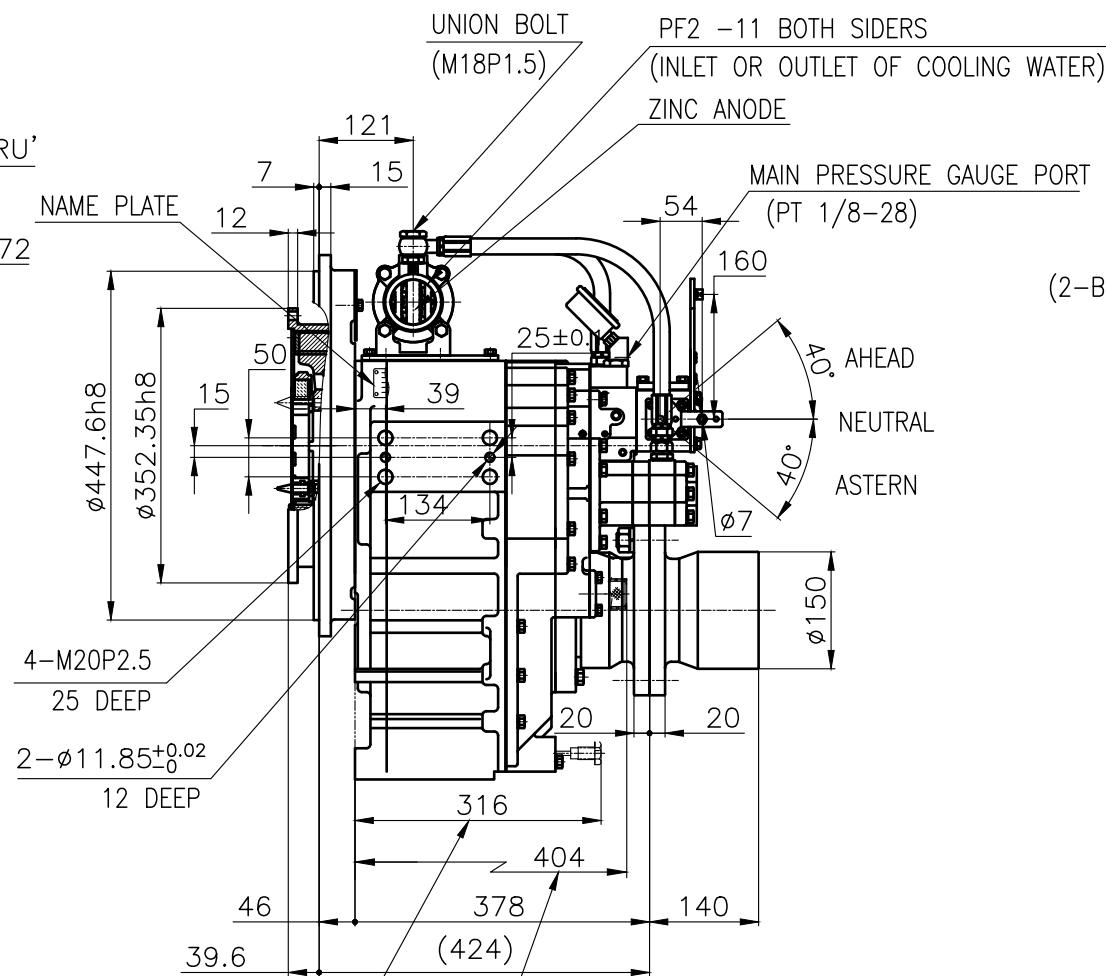
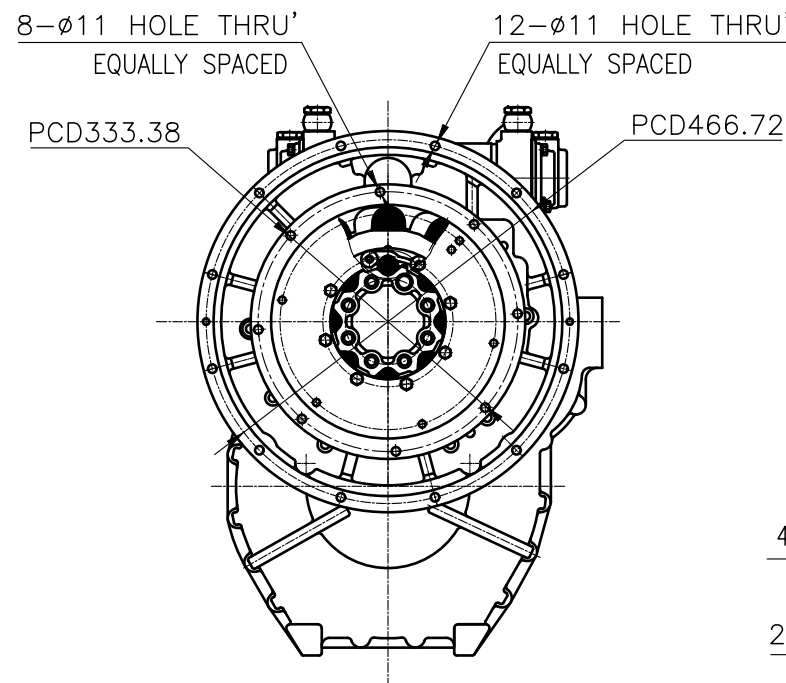
### OUTPUT SHAFT COUPLING & PROPELLER COUPLING DIMENSION



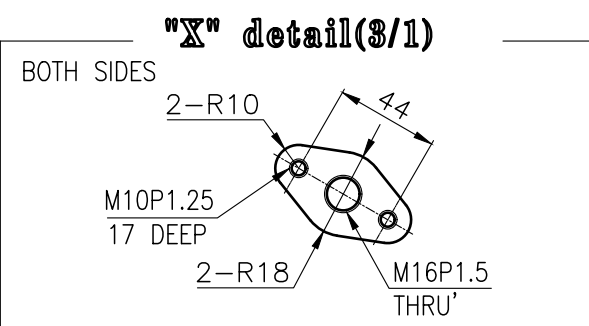
## INPUT COUPLING DIMENSION



DMT 150H MARINE TRANSMISSION SPECIFICATION			
GEAR RATIO	1.83, 2.09 , 2.51 , 3.08 , 3.43		
TOTAL WEIGHT	APPROX. 287 kg(DRY)		
OIL CAPACITY	APPROX. 5.5 L		
OIL VISCOSITY	SAE # 30		
OIL PRESSURE	1.96 ~ 2.35 MPa		CLUTCH OIL
DIRECTION OF ROTATION IN FORWARD	INPUT	C.C.W VIEWED FROM THE STERN	
	OUTPUT	C.W VIEWED FROM THE STERN	
OIL CHANGE INTERVAL	THE FIRST 100HOURS OF INITIAL OPERATION		
	AND EVERY 1000HOURS THEREAFTER		
SHIFTING LIMIT	UNDER 50% OF THE RATED ENGINE SPEED		
OIL COOLER	WATER FLOW 40 ~ 60L/min		
	TEMPERATURE OF COOLING WATER		MAX 32℃
OPERATING TORQUE OF SHIFTING LEVER			UNDER 2.94Nm



## BRACKET DIMENSION



- REMARK (HOT) 2-φ  
 1.HOUSING: SAE#2  
 2.DRIVING RING: SAE 11.5"  
 3.COULING TYPE : DUAL STAGE  
 4.APPLICATION ENGINE : STANDARD

원형 치 TOLERANCE ON						번호 NO.		품번 PART NO.		명 PART NAME		개 수 Q'TY	재 질 MATERIAL	구 SIZE	비 고 REMARKS				
FRACTIONS		소 수 DECIMALS		각 도 ANGLES								형 식 TYPE	DMT150H		원 도 번 ORIGINAL DWG. NO.				
± ———		± ———		± ———								품 명 NAME	MARINE TRANSMISSION						
원 단 치	절삭 가공					재 질 MATERIAL		형 식 TYPE		DMT150H									
	구	徑	조	공	정	작성 DATE 2018.06.29		척 도 SCALE 1/1		품 명 NAME		MARINE TRANSMISSION							
	승 인 APPROVED BY					검 도 CHECKED BY		제 도 DRAWN		설 계 DESIGNED		도 번 DWG. NO.		151000A~E-2115DCH					
	JK.Kim					TH.Cha		BJ.Moon				개정 (REV.) 000							
	D-I INDUSTRIAL									크 기 SIZE		A 3		코-드 번 호 CODE ID. NO.					
1 조과 4 이하 ± 0.3 ± 0.1 ± 0.05																			
4 16 ± 0.5 ± 0.2 ± 0.07																			
16 63 ± 0.7 ± 0.3 ± 0.1																			
63 250 ± 1.2 ± 0.5 ± 0.2																			
250 1000 ± 2.0 ± 0.8 ± 0.3																			