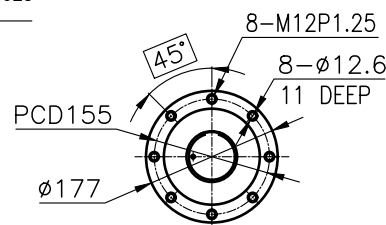
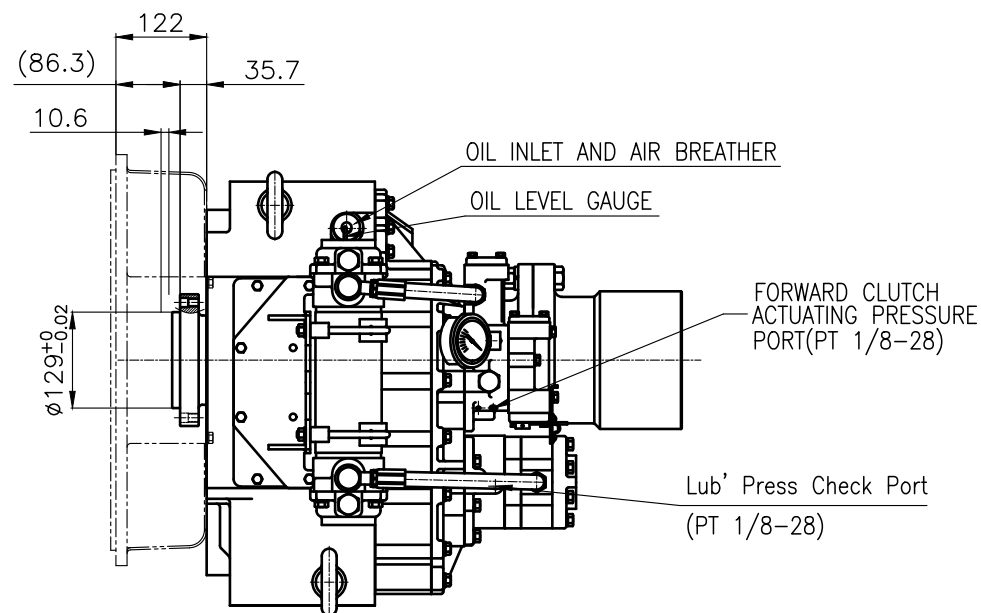


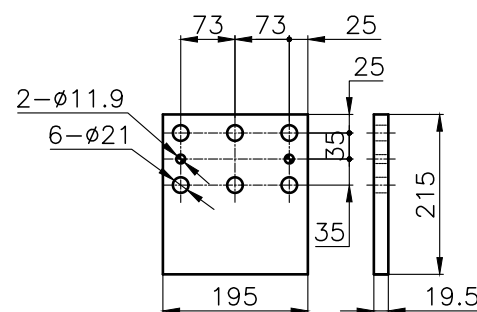
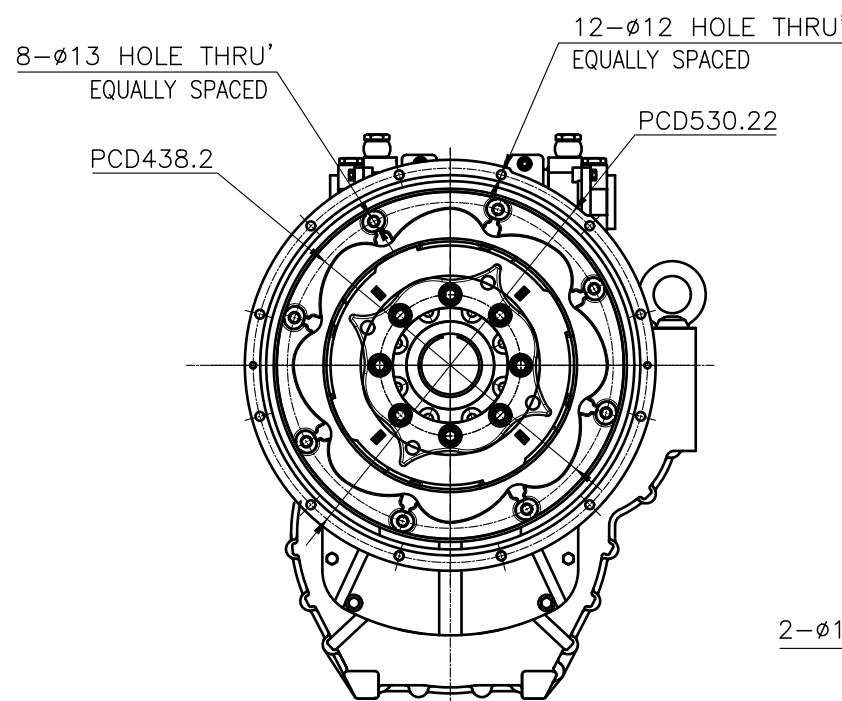
OUTPUT SHAFT COUPLING &
PROPELLER COUPLING DIMENSION



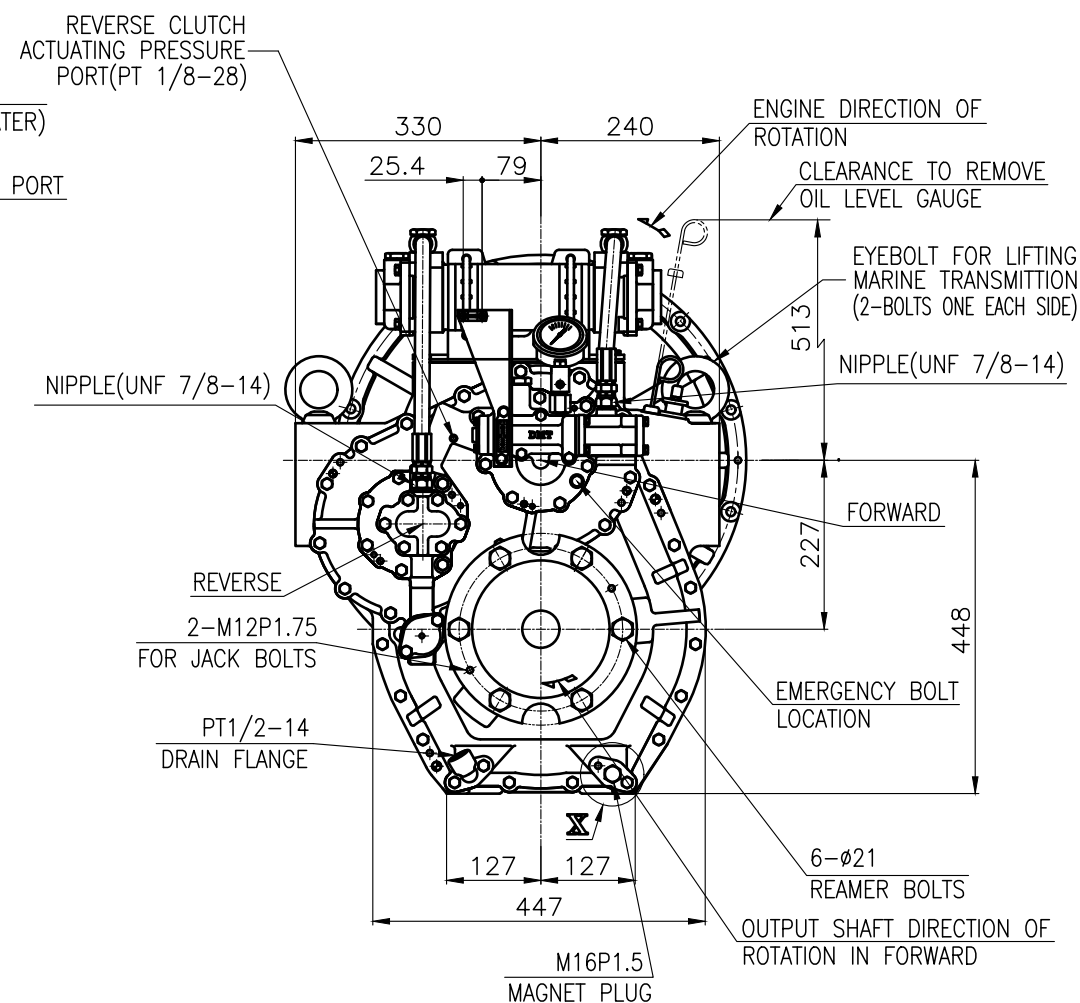
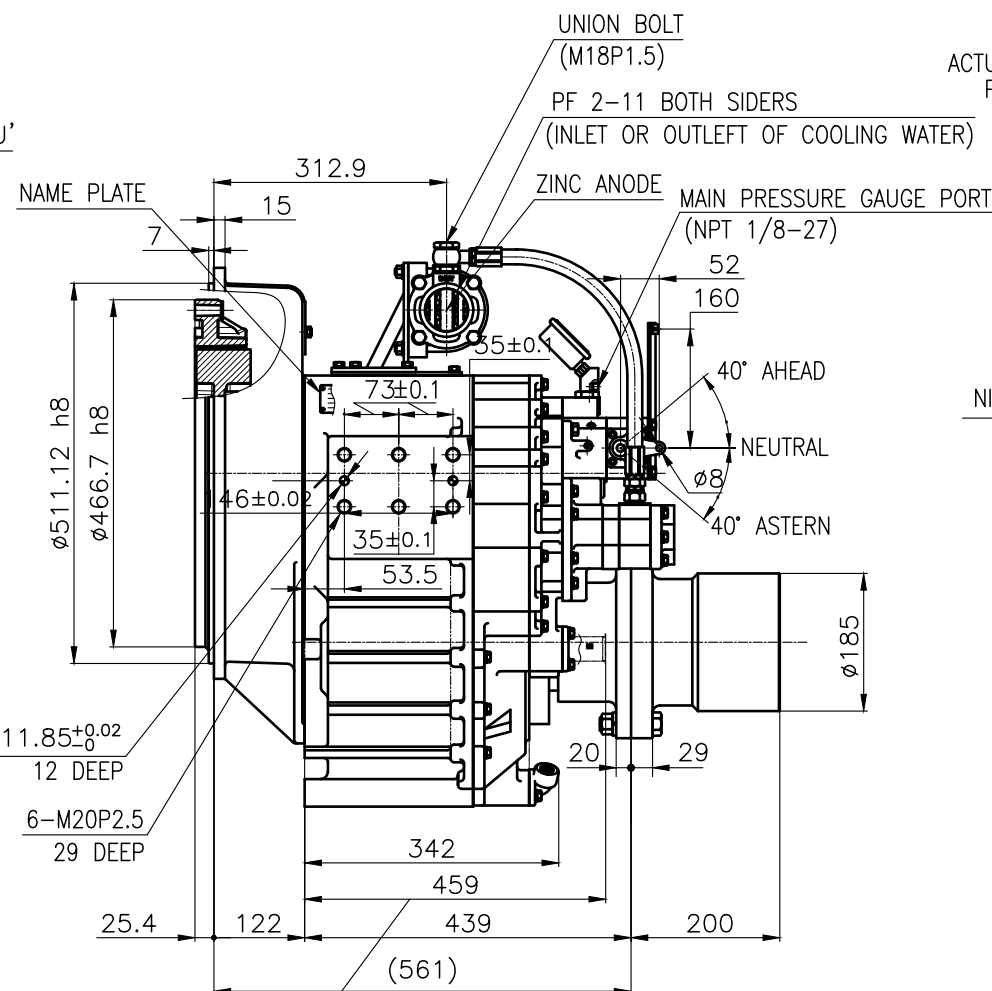
INPUT COUPLING
DIMENSION



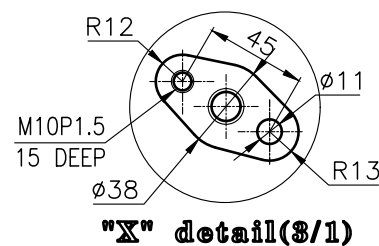
DMT240H MARINE TRANSMISSION SPECIFICATION		
GEAR RATIO	1.50 , 1.97 , 2.44 , 2.93 , 3.40	
TOTAL WEIGHT	APPROX. 400 Kg(DRY)	
OIL CAPACITY	APPROX. 8L	
OIL VISCOSITY	SAE # 30	
OIL PRESSURE	1.96 ~ 2.54 MPa	CLUTCH OIL
DIRECTION OF ROTATION	INPUT	C.C.W VIEWED FROM THE STERN
	OUTPUT	C.W VIEWED FROM THE STERN
OIL CHANGE INTERVAL	THE FIRST 100HOURS OF INITIAL OPERATION AND EVERY 1000HOURS THEREAFTER	
SHIFTING LIMIT	UNDER 50% OF THE RATED ENGINE SPEED	
OIL COOLER	WATER FLOW	40 ~ 60 L/m
	TEMPERATURE OF COOLING WATER	MAX 32°C
OPERATING TORQUE OF SHIFTING LEVER	UNDER 2.94Nm	



BRACKET DIMENSION



REMARK
1.HOUSING: SAE#1
2.DRIVING RING: SAE 14"
3.COUPLING TYPE
CENTA Flex Coupling (77268801)



TOLERANCE ON				NO.	PART NO.	PART NAME	Q'TY	MATERIAL	SIZE	REMARKS
FRACTIONS	DECIMALS	ANGLES								
±	±	±								
절삭가공				작성 DATE	SCALE	1/1	인	DMT240H	원도	ORIGINAL DWG. NO.
1 초과 4 이하	± 0.3	± 0.1	± 0.05	2018.06.29			승인	MARINE TRANSMISSION	명	
4	± 0.5	± 0.2	± 0.07				검	NAME	TYPE	
16	± 0.7	± 0.3	± 0.1				도	24000GA~E-114CFR	도	개형(REV.)
63	± 1.2	± 0.5	± 0.2				설	000	DWG. NO.	
250	± 2.0	± 0.8	± 0.3				계		SIZE	
				APPROVED BY	CHECKED BY	DRAWN	DESIGNED	D-I INDUSTRIAL		
				JK.Kim	TH.Cha	CH.Baek		A 8		
							코드 번호			
							CODE ID. NO.			