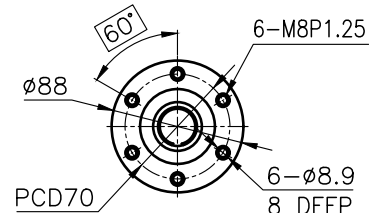
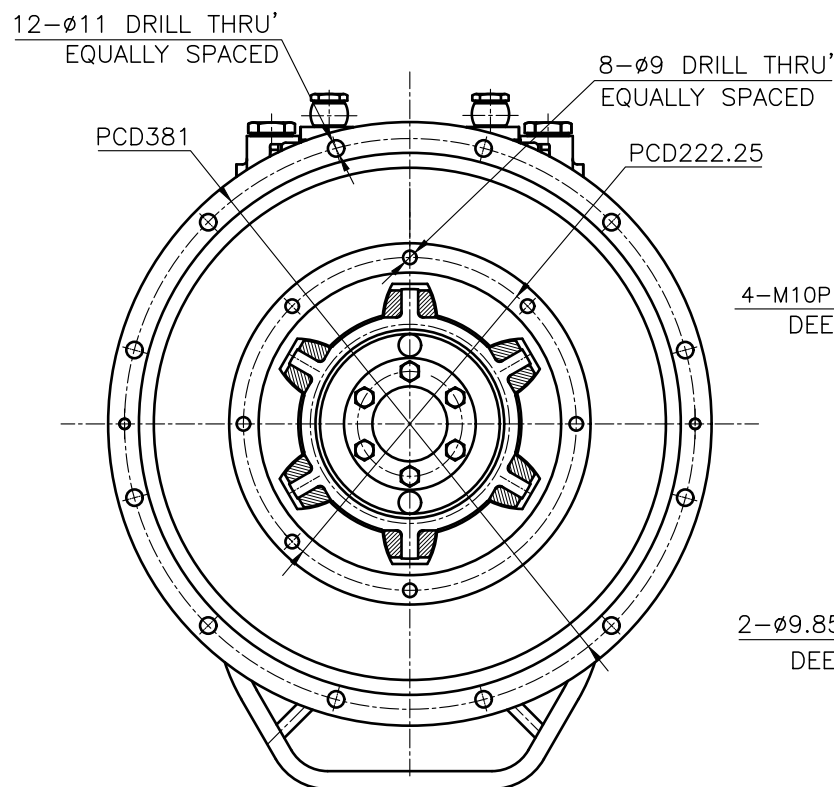


OUTPUT SHAFT COUPLING & PROPELLER COUPLING DIMENSION

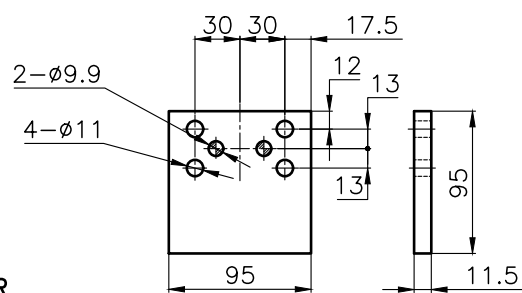


INPUT COUPLING DIMENSION

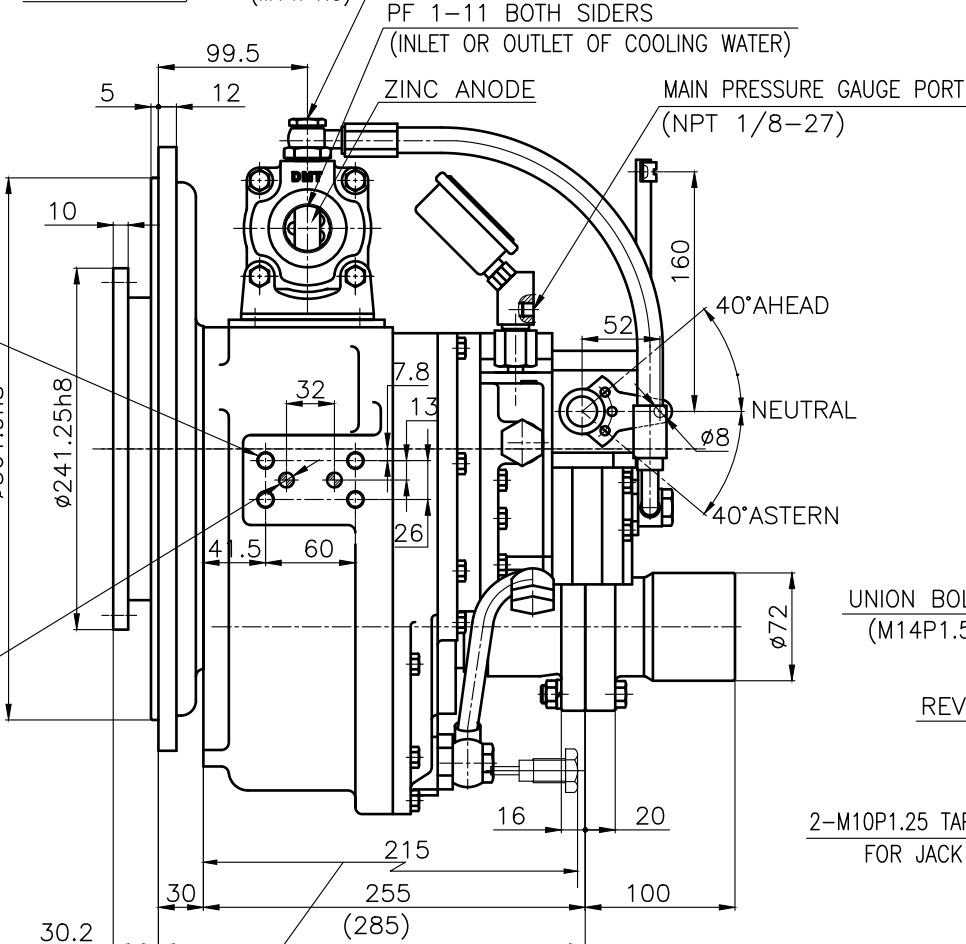
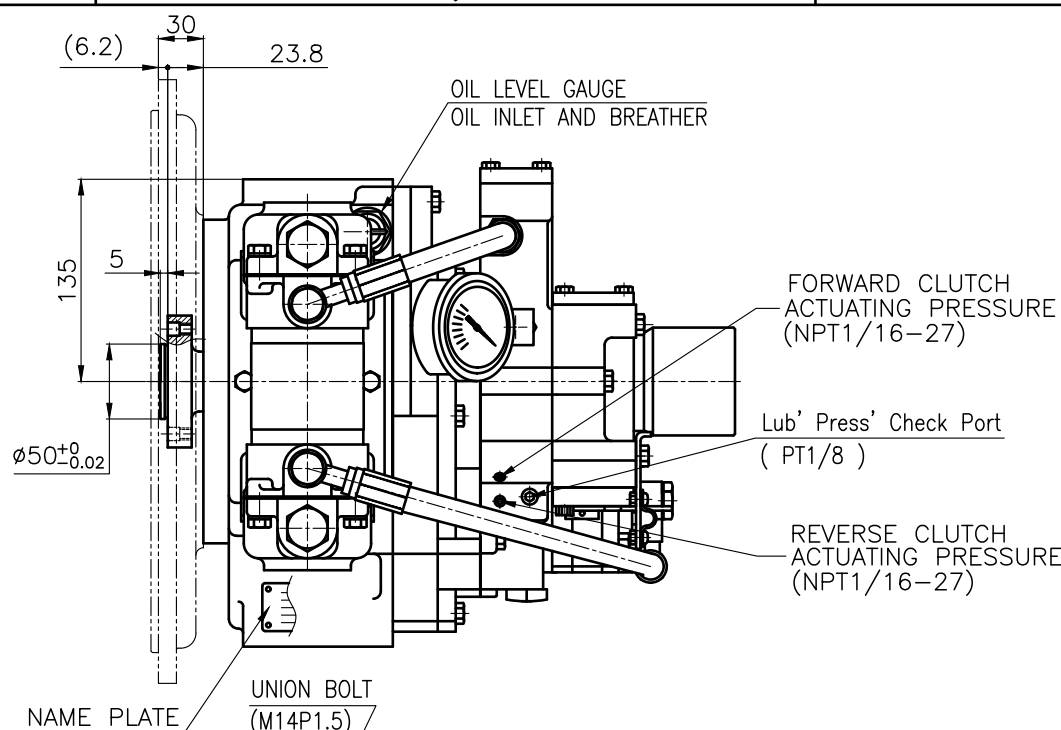


REMARK

- 1.HOUSING: SAE#4
- 2.DRIVING RING: SAE 7.5"
- 3.COULING TYPE : RUBBER

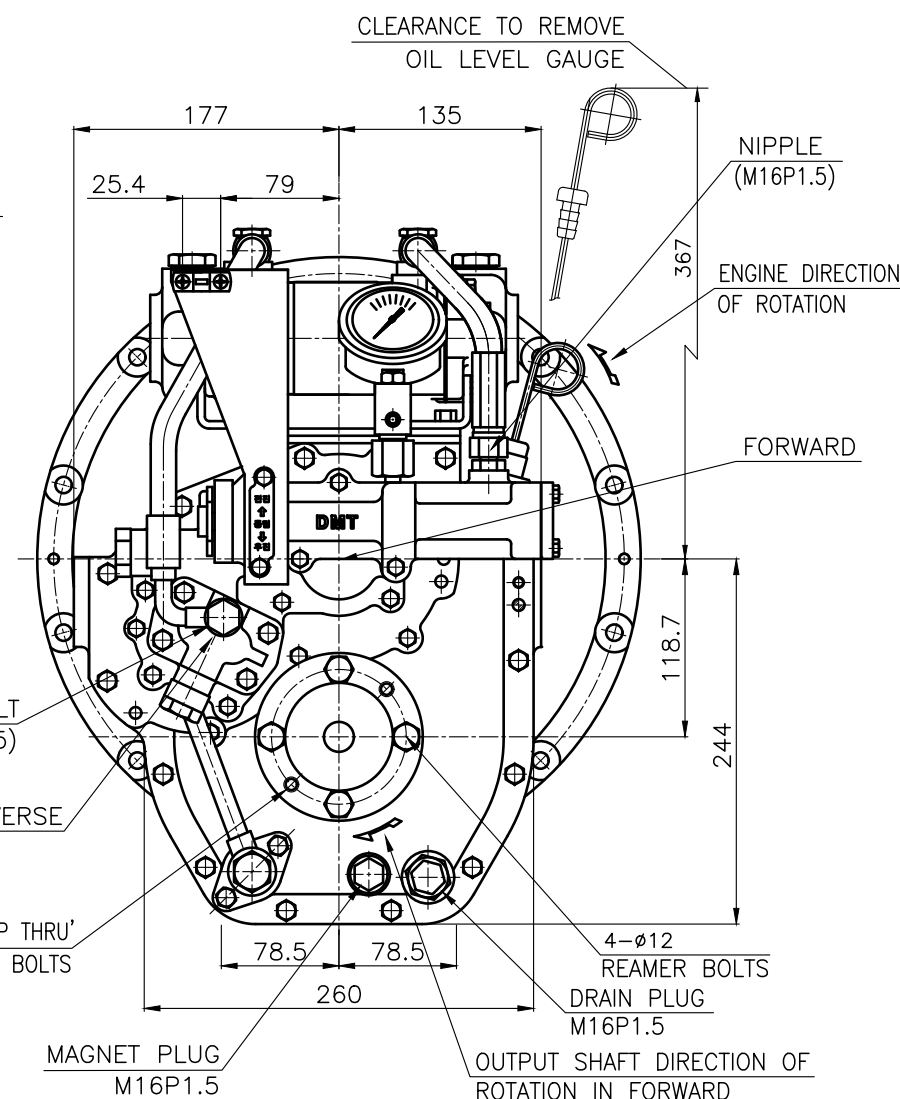


BRACKET DIMENSION



CLEARANCE TO REMOVE  
MAGNET PLUG

DMT 25AL MARINE TRANSMISSION SPECIFICATION			
GEAR RATIO	1.64, 2.07, 2.52, 2.96, 3.32		
TOTAL WEIGHT	APPROX. 77 Kg(DRY)		
OIL CAPACITY	APPROX. 2L		
OIL VISCOSITY	SAE # 30		
OIL PRESSURE	1.96 ~ 2.35 MPa		CLUTCH OIL
DIRECTION OF ROTATION IN FORWARD	INPUT	C.C.W VIEWED FROM THE STERN	
	OUTPUT	C.W VIEWED FROM THE STERN	
OIL CHANGE INTERVAL	THE FIRST 100HOURS OF INITIAL OPERATION		
	AND EVERY 1000HOURS THEREAFTER		
SHIFTING LIMIT	UNDER 50% OF THE RATED ENGINE SPEED		
OIL COOLER	WATER FLOW 20 ~ 40 L/m		
	TEMPERATURE OF COOLING WATER		MAX 32°
OPERATING TORQUE OF SHIFTING LEVER			UNDER 2.94Nm



공통공차 TOLERANCE ON					번호 NO.	부품 PART NO.		부품 PART NAME		개수 Q'TY	재질 MATERIAL	규격 SIZE	비고 REMARKS
분수 FRACTIONS		소수 DECIMALS		각도 ANGLES	재질 MATERIAL					형식 TYPE	원도 번호 ORIGINAL DWG. NO.		
± —		± —		± —									
일반공차	절삭가공				작형 DATE 2018.06.20					척도 SCALE N/S			
	구	절	조	공	승인 APPROVED BY		검도 CHECKED BY		제도 DRAWN	설계 DESIGNED	품명 NAME		
	1 초과 4 이하	± 0.3	± 0.1	± 0.05	JK.Kim		TH.Cha		BJ.Moon		도 번호 DWG. NO.		
	4 16	± 0.5	± 0.2	± 0.07							025000LA~E-475RC		
	16 63	± 0.7	± 0.3	± 0.1							개칭(REFERENCE) 000		
공차	63 250	± 1.2	± 0.5	± 0.2	D-I INDUSTRIAL					크기 SIZE		코드 번호 CODE ID. NO.	
	250 1000	± 2.0	± 0.8	± 0.3						A 3			

D-I INDUSTRIAL