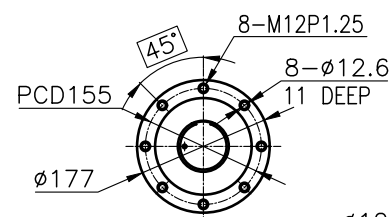
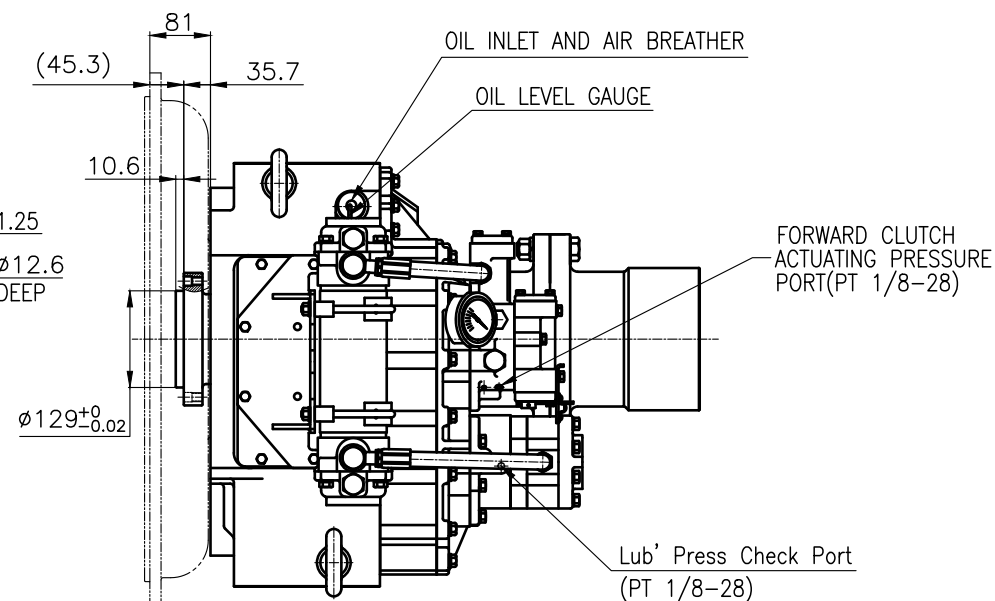


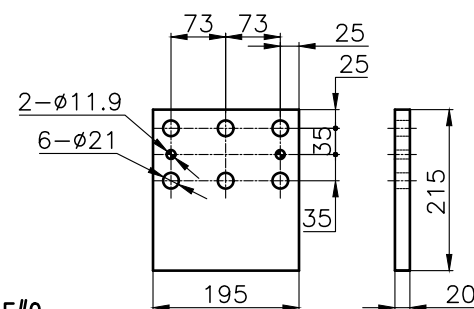
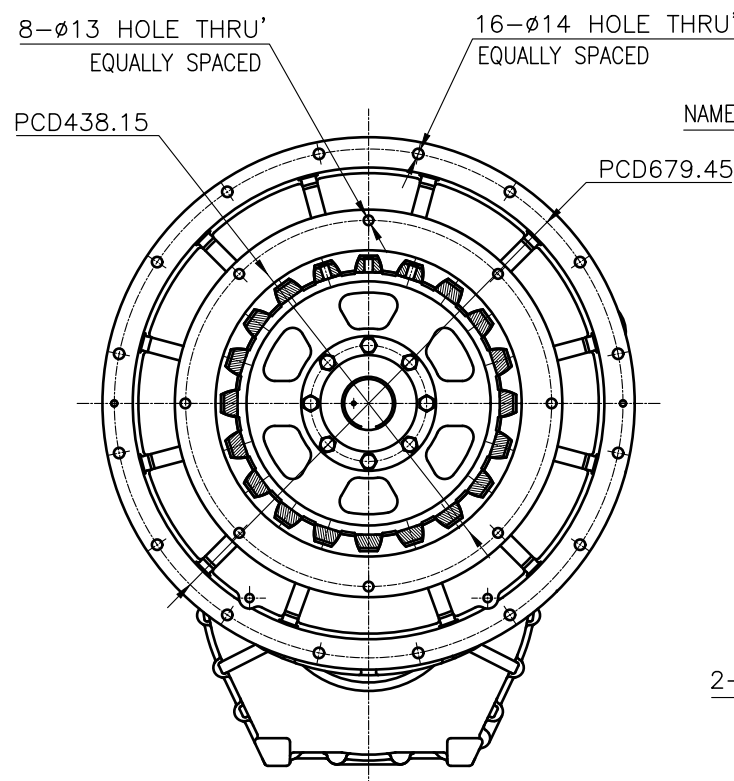
OUTPUT SHAFT COUPLING & PROPELLER COUPLING DIMENSION



INPUT COUPLING DIMENSION

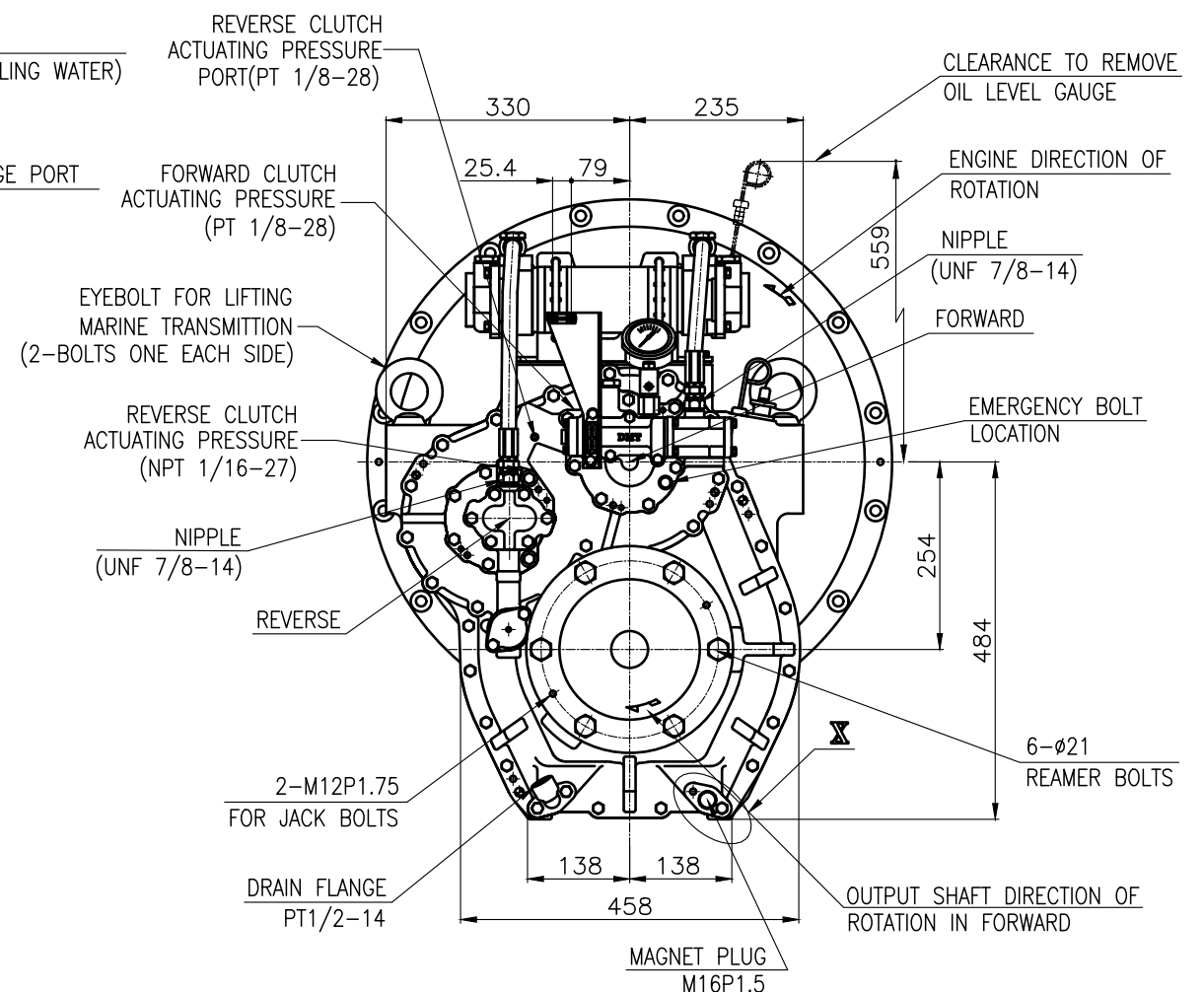
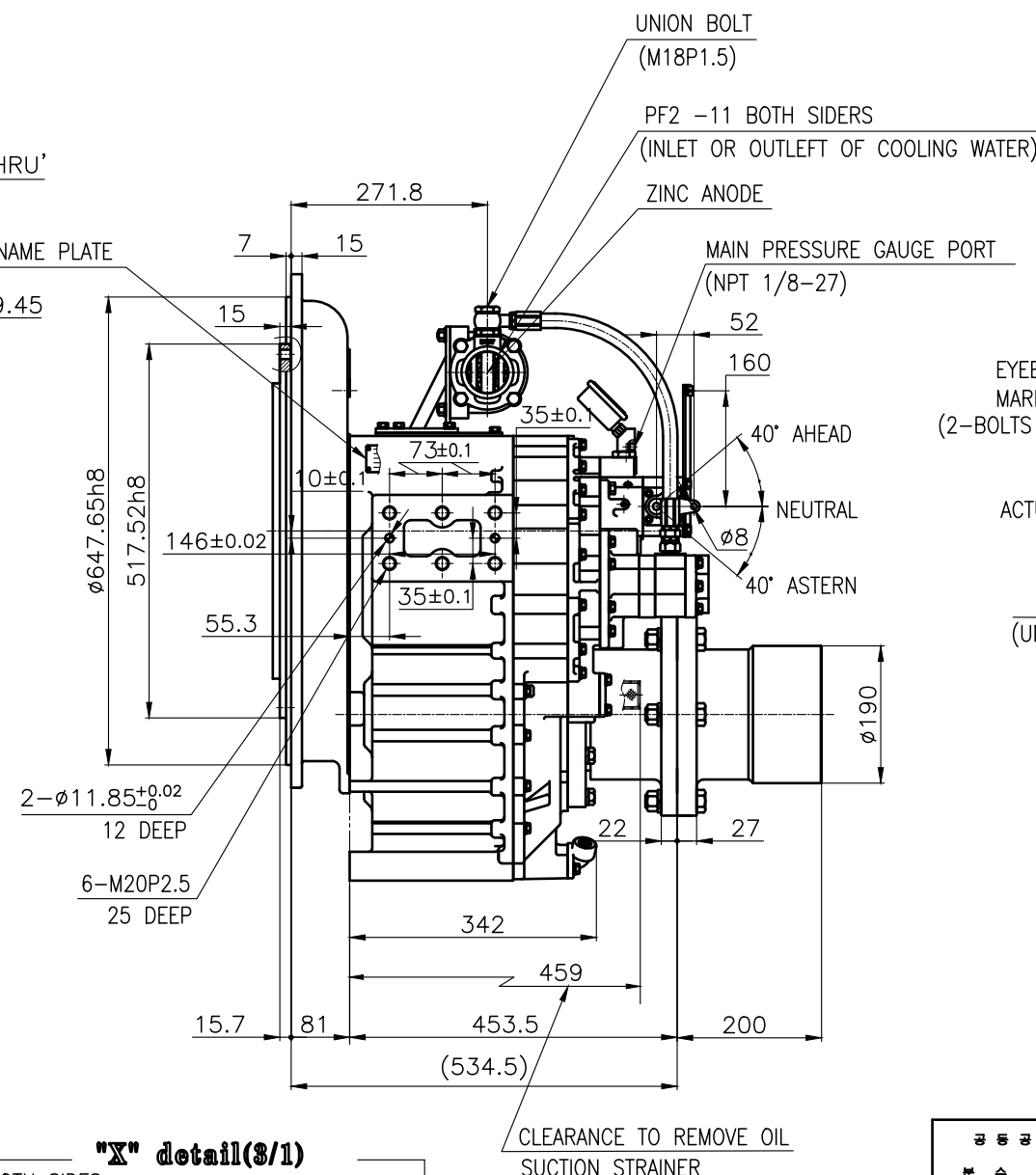
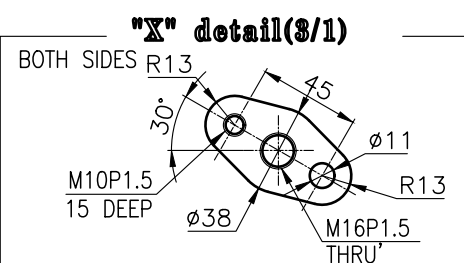




DMT260H MARINE TRANSMISSION SPECIFICATION			
GEAR RATIO	2.06, 2.50, 2.92, 3.26		
TOTAL WEIGHT	APPROX. 490 Kg(DRY)		
OIL CAPACITY	APPROX. 8 L		
OIL VISCOSITY	SAE # 30		
OIL PRESSURE	1.96 ~ 2.54 MPa	CLUTCH OIL	
DIRECTION OF ROTATION IN FORWARD	INPUT	C.C.W VIEWED FROM THE STERN	
	OUTPUT	C.W VIEWED FROM THE STERN	
OIL CHANGE INTERVAL	THE FIRST 100HOURS OF INITIAL OPERATION		
	AND EVERY 1000HOURS THEREAFTER		
SHIFTING LIMIT	UNDER 50% OF THE RATED ENGINE SPEED		
OIL COOLER	WATER FLOW 60 ~ 80 L/min		
	TEMPERATURE OF COOLING WATER		MAX 32℃
OPERATING TORQUE OF SHIFTING LEVER		UNDER 2.94Nm	



REMARK
1.HOUSING: SAE#0
2.DRIVING RING: SAE 16"
3.COUPLING TYPE : RUBBER

BRACKET DIMENSION



공통공차 TOLERANCE ON					번호 NO.	품번 PART NO.		품명 PART NAME		개수 Q'TY	재질 MATERIAL	규격 SIZE	비고 REMARKS	
분수 FRACTIONS		소수 DECIMALS		각도 ANGLES	재질 MATERIAL				형식 TYPE		DMT260H		원도 번호 ORIGINAL DWG. NO.	
±		±		±	 작성 DATE 2018.06.29		척도 SCALE 1/1		품명 NAME		MARINE TRANSMISSION			
일반차	절삭가공				승인 APPROVED BY		검도 CHECKED BY		제도 DRAWN	설계 DESIGNED	도면 번호 DWG. NO.		개정 (REV.)	
					JK.Kim		TH.Cha		BJ.Moon		25000GA~D-016RC		000	
	1 초과 4 이하				± 0.3		± 0.1		± 0.05					
	4 16				± 0.5		± 0.2		± 0.07					
	16 63				± 0.7		± 0.3		± 0.1					
	63 250				± 1.2		± 0.5		± 0.2					
	250 1000				± 2.0		± 0.8		± 0.3					
 D-I INDUSTRIAL					크기 SIZE	A 3	코드 번호 CODE ID. NO.							