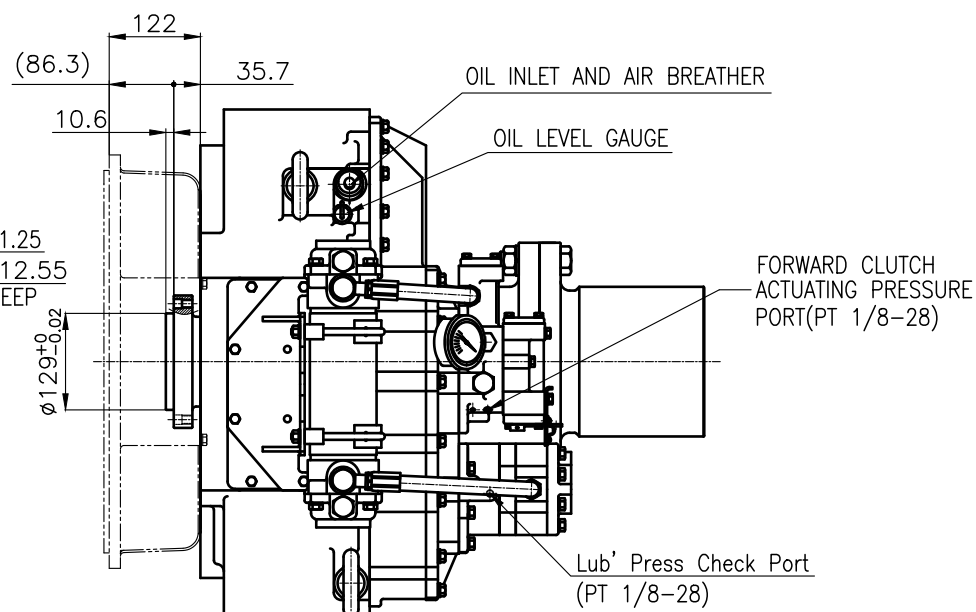
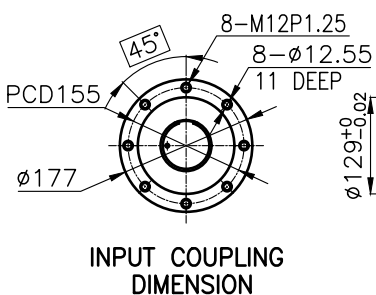
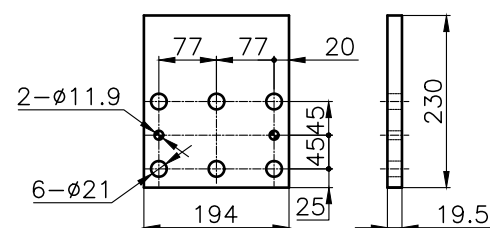
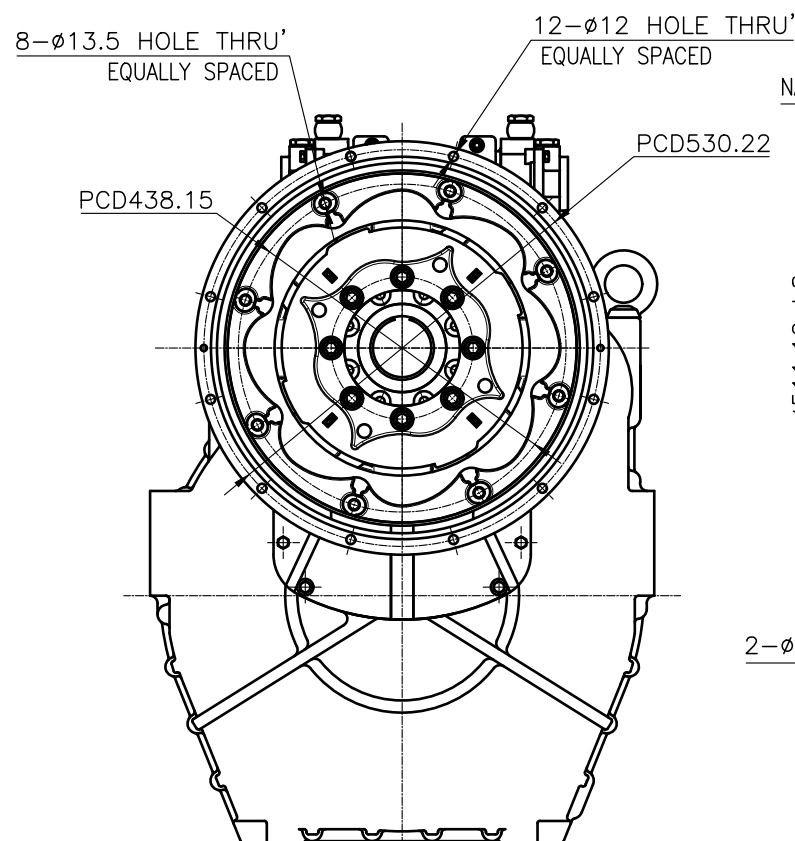


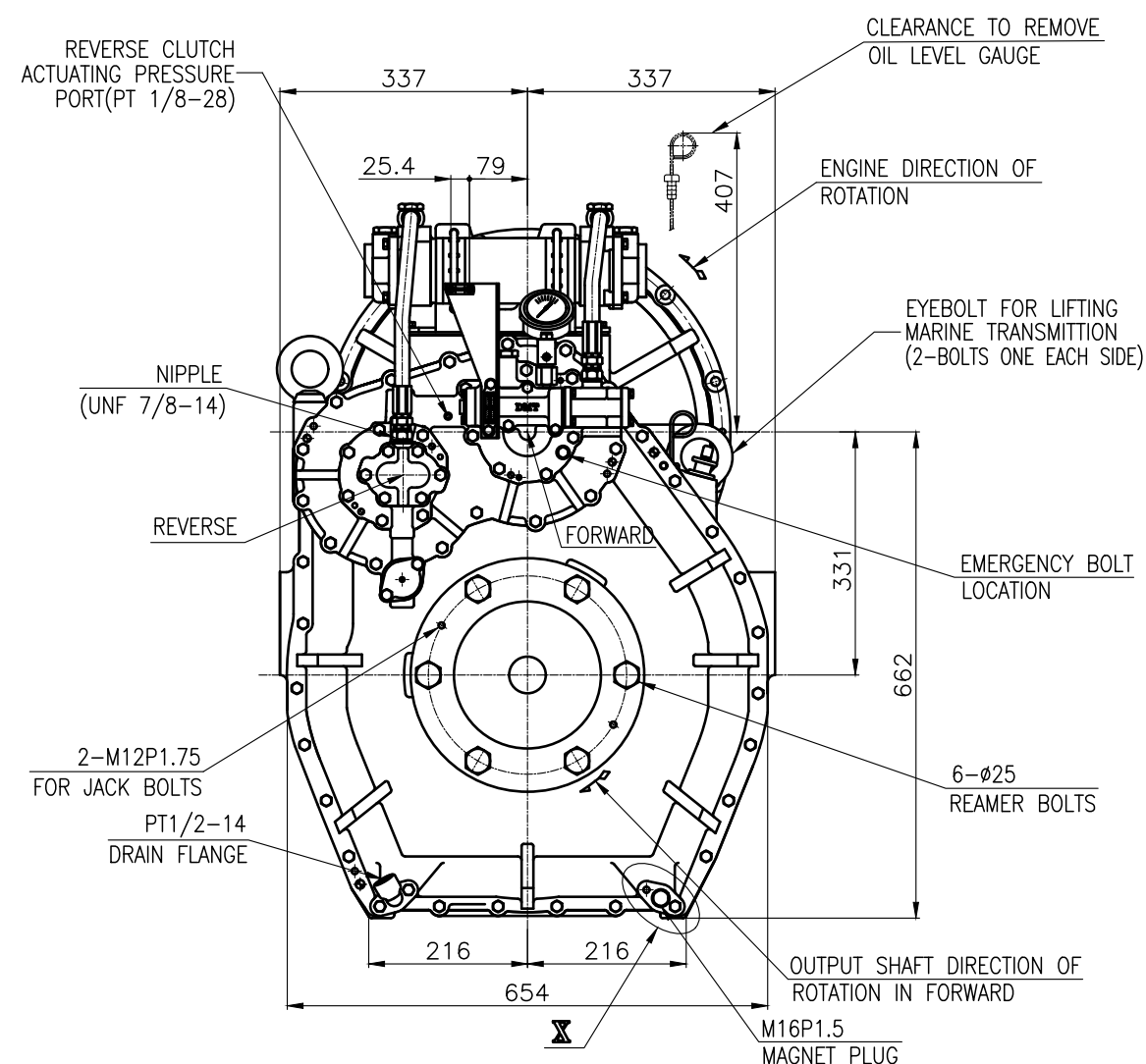
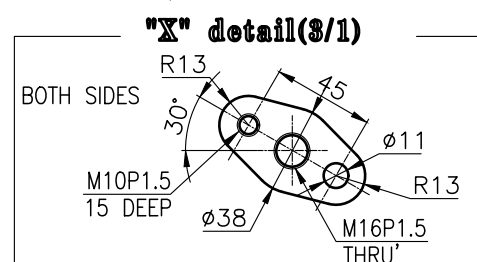
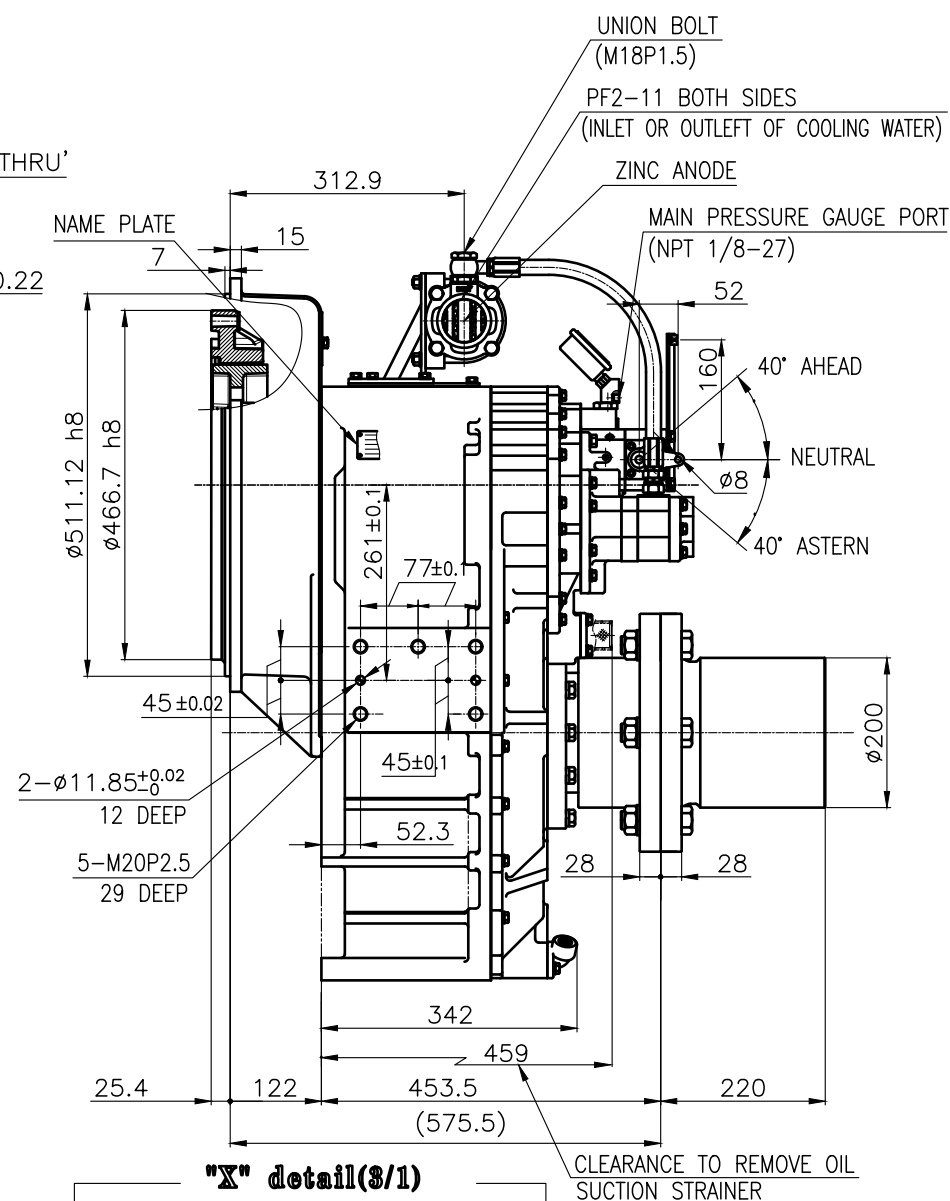
### OUTPUT SHAFT COUPLING & PROPELLER COUPLING DIMENSION




DMT260HL MARINE TRANSMISSION SPECIFICATION			
GEAR RATIO	3.53, 4.08, 4.52, 5.04		
TOTAL WEIGHT	APPROX. 640 Kg(DRY)		
OIL CAPACITY	APPROX. 19 L		
OIL VISCOSITY	SAE # 30		
OIL PRESSURE	1.96 ~ 2.54 MPa	CLUTCH OIL	
DIRECTION OF ROTATION IN FORWARD	INPUT	C.C.W VIEWED FROM THE STERN	
	OUTPUT	C.W VIEWED FROM THE STERN	
OIL CHANGE INTERVAL	THE FIRST 100HOURS OF INITIAL OPERATION		
	AND EVERY 1000HOURS THEREAFTER		
SHIFTING LIMIT	UNDER 50% OF THE RATED ENGINE SPEED		
OIL COOLER	WATER FLOW 60 ~ 80 L/min		
	TEMPERATURE OF COOLING WATER		MAX 32°C
OPERATING TORQUE OF SHIFTING LEVER		UNDER 2.94Nm	



BRACKET DIMENSION



공 통 공 차 TOLERANCE ON					번 호 NO.	부 품 PART NO.	부 품 PART NAME 명	개 수 Q'TY	재 질 MATERIAL	규 SIZE	비 고 REMARKS	
분 수 FRACTIONS 소 수 DECIMALS 각 도 ANGLES					재 질 MATERIAL			형 식 TYPE	원 도 번 ORIGINAL DWG. NO.			
± — ± — ± —								작 성 DATE 2018.06.29	척 도 SCALE 1/1			
절 삭 가 공					승 인 APPROVED BY		검 도 CHECKED BY	제 도 DRAWN	설 계 DESIGNED	부 품 명 NAME		
구 변 조 굵 종 굵 정 교					JK.Kim		TH,Cha	CH,Baek	MARINE TRANSMISSION			
1 초 과 4 이 하 ± 0.3 ± 0.1 ± 0.05									도 번 DWG. NO.			
4 16 ± 0.5 ± 0.2 ± 0.07									26000GA~C-114CFR			
16 63 ± 0.7 ± 0.3 ± 0.1									기 계 (REV.) 000			
63 250 ± 1.2 ± 0.5 ± 0.2												
250 1000 ± 2.0 ± 0.8 ± 0.3												
					D-I INDUSTRIAL							
					크 기 SIZE		A 3		코 드 번 호 CODE ID. NO.			