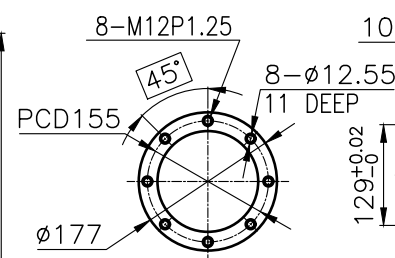
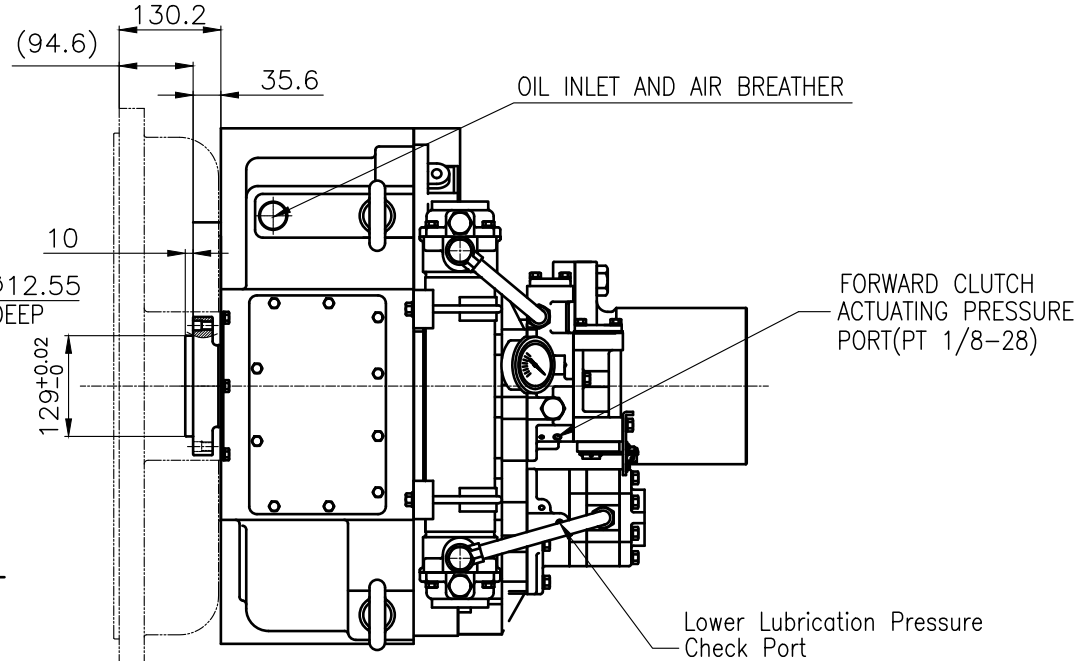


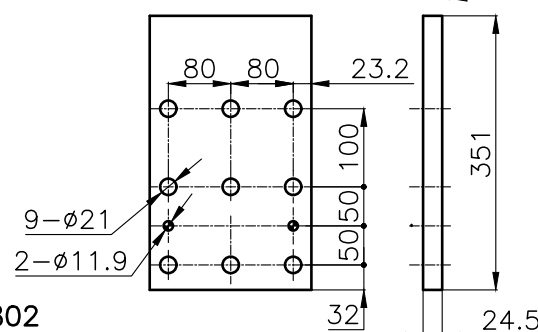
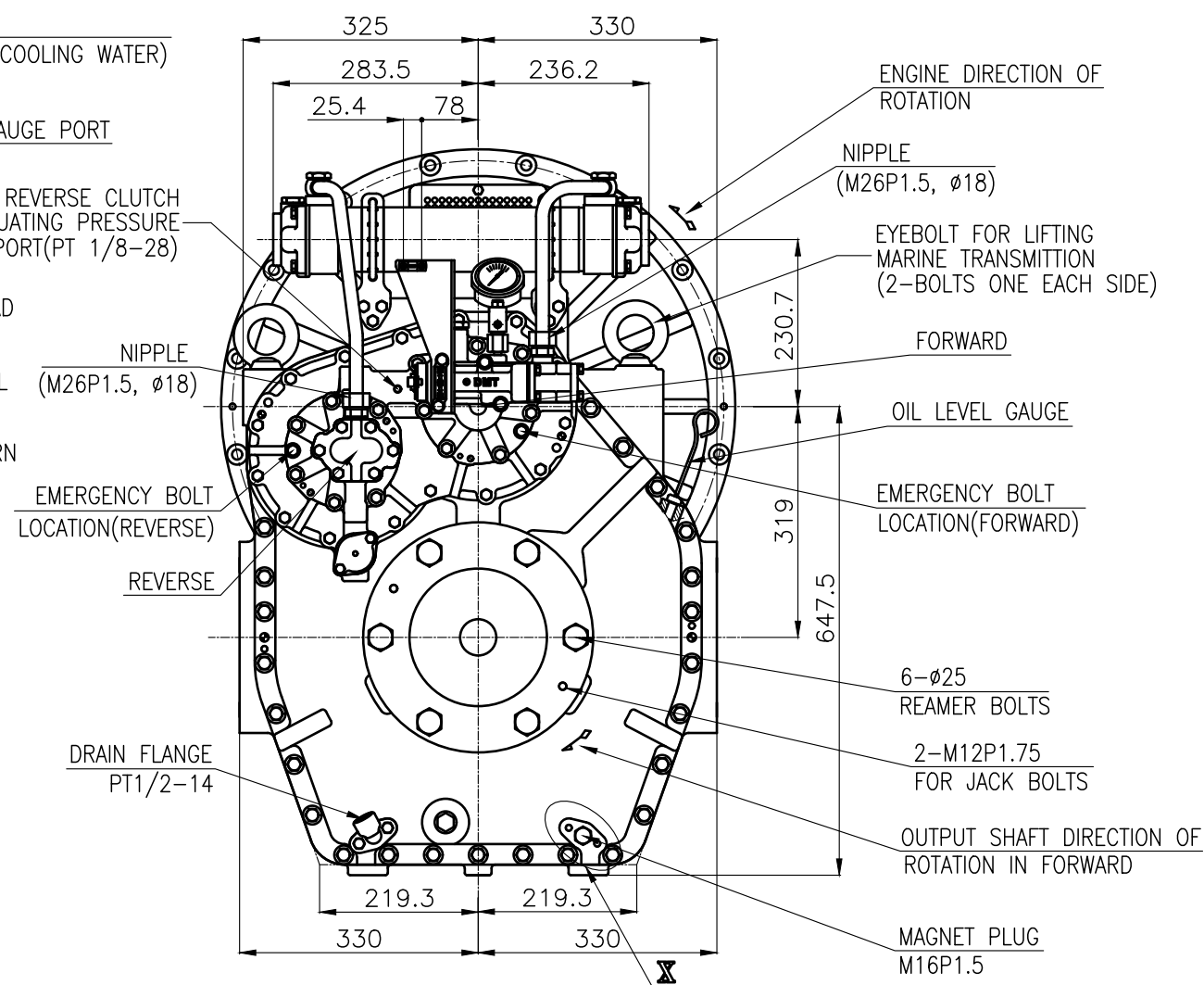
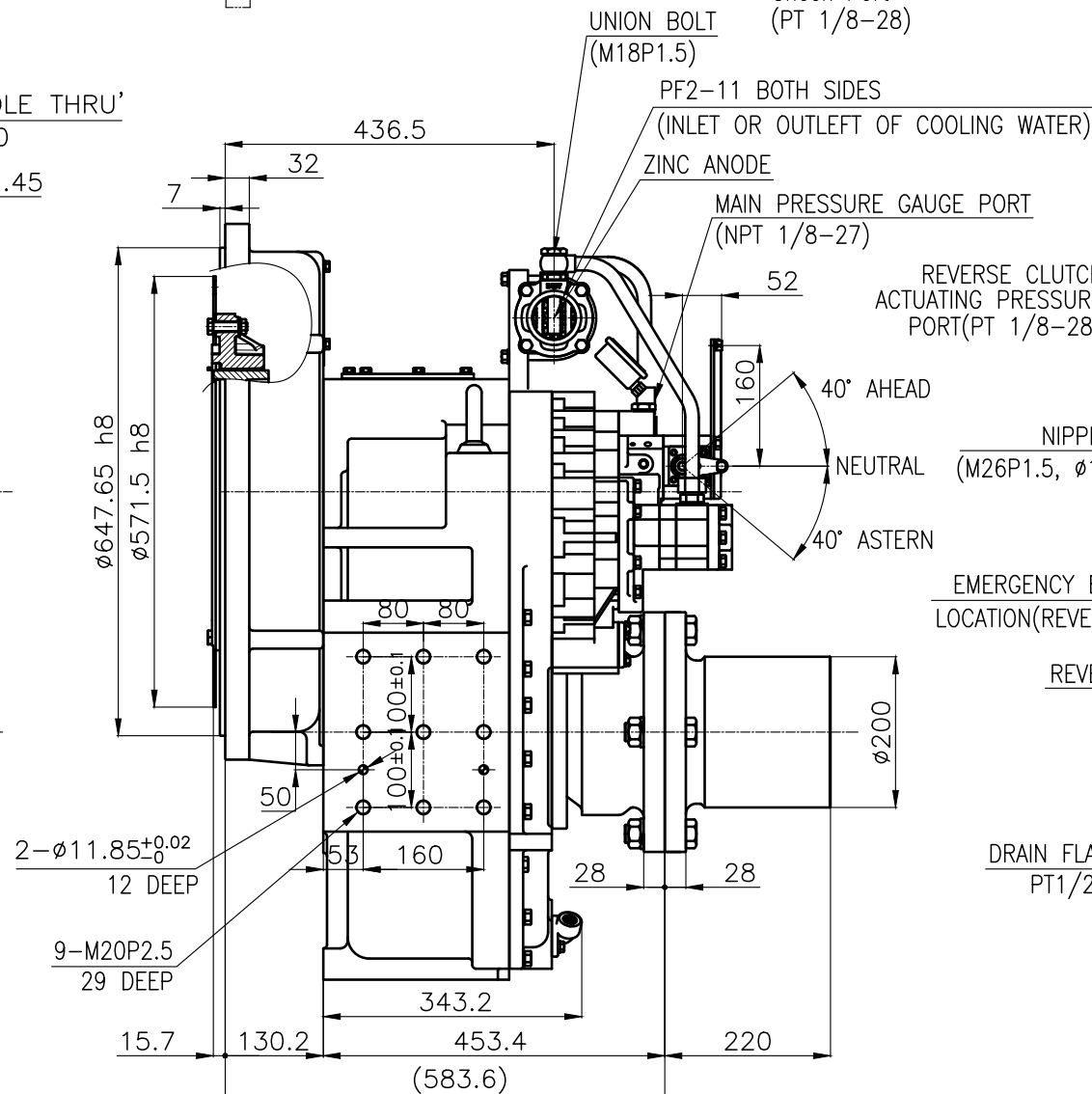
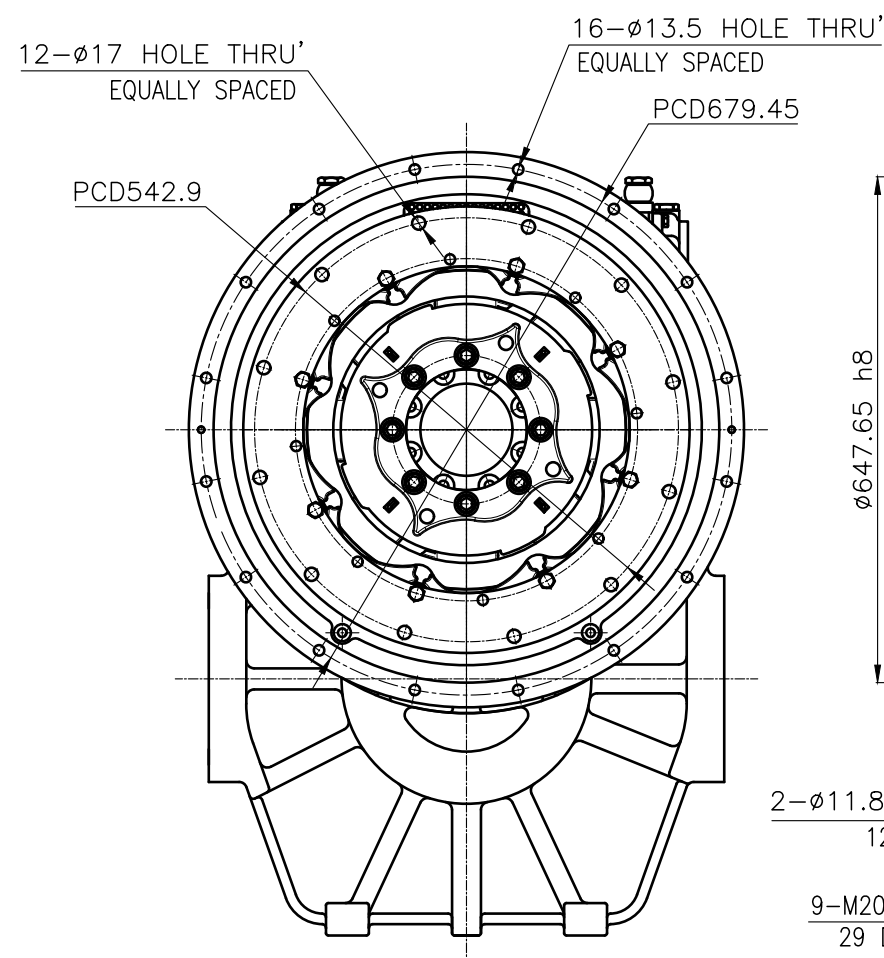
### OUTPUT SHAFT COUPLING & PROPELLER COUPLING DIMENSION



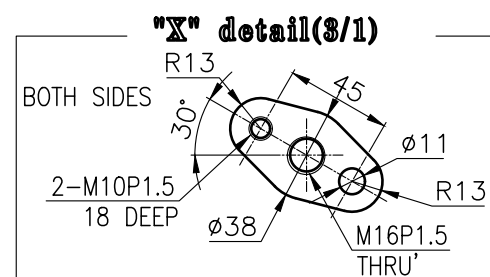
## INPUT COUPLING DIMENSION



DMT300HL MARINE TRANSMISSION SPECIFICATION			
GEAR RATIO	2.61, 3.10, 3.56, 4.13, 4.59		
TOTAL WEIGHT	APPROX. 847 Kg(DRY)		
OIL CAPACITY	APPROX. 16.5 L		
OIL VISCOSITY	SAE # 30		
OIL PRESSURE	1.96 ~ 2.54 MPa	CLUTCH OIL	
DIRECTION OF ROTATION IN FORWARD	INPUT	C.C.W VIEWED FROM THE STERN	
	OUTPUT	C.W VIEWED FROM THE STERN	
OIL CHANGE INTERVAL	THE FIRST 100HOURS OF INITIAL OPERATION		
	AND EVERY 1000HOURS THEREAFTER		
SHIFTING LIMIT	UNDER 50% OF THE RATED ENGINE SPEED		
OIL COOLER	WATER FLOW 90 ~ 120L/m		
	TEMPERATURE OF COOLING WATER		MAX 32°
OPERATING TORQUE OF SHIFTING LEVER		UNDER 2.94Nm	





BRACKET DIMENSION



REMARK

1.HOUSING : SAE# 0	<u>9</u>
2.DRIVING RING : SAE 18"	<u>2</u>
3.COUPLING TYPE	
-CENTA Flex Coupling : 77268802	

원 동 치 TOLERANCE ON FRACTIONS      SOUS DECIMALS      각 도 ANGLES $\pm$ ———— $\pm$ ———— $\pm$ ————						번호 NO. 품 PART NO. 번 품 PART NAME 명		개 수 Q'TY 재 질 MATERIAL		규 격 SIZE 비 고 REMARKS	
						재 질 MATERIAL  <div style="display: flex; justify-content: space-between;"> <span>작성 DATE 2018.06.29</span> <span>척 도 SCALE N/S</span> </div>		형 식 TYPE DMT300HL		원 도 번 ORIGINAL DWG. NO.	
						 <div style="display: flex; justify-content: space-between;"> <span>승 인 APPROVED BY JK.Kim</span> <span>검 도 CHECKED BY TH.Cha</span> </div>		품 명 NAME MARINE TRANSMISSION			
						도 번 DWG. NO. JK.Kim TH.Cha CH.Baek		코 드 코드 CODE ID. NO. 30000GA~E-018CFR		개정(REV.) 000	
차 差 구 區 1 초과 4 이하 ± 0.3 ± 0.1 ± 0.05 4 16 ± 0.5 ± 0.2 ± 0.07 16 63 ± 0.7 ± 0.3 ± 0.1 63 250 ± 1.2 ± 0.5 ± 0.2 250 1000 ± 2.0 ± 0.8 ± 0.3						크 기 SIZE A 3					
◎D-I INDUSTRIAL											