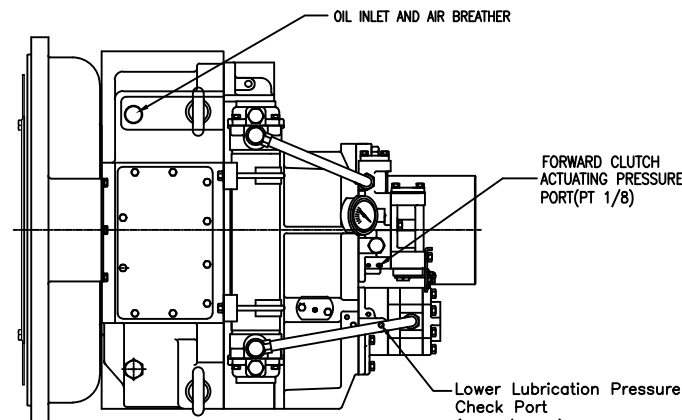
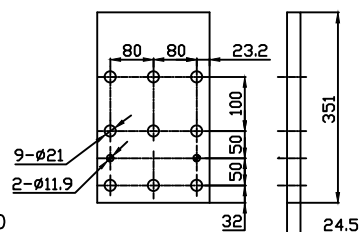
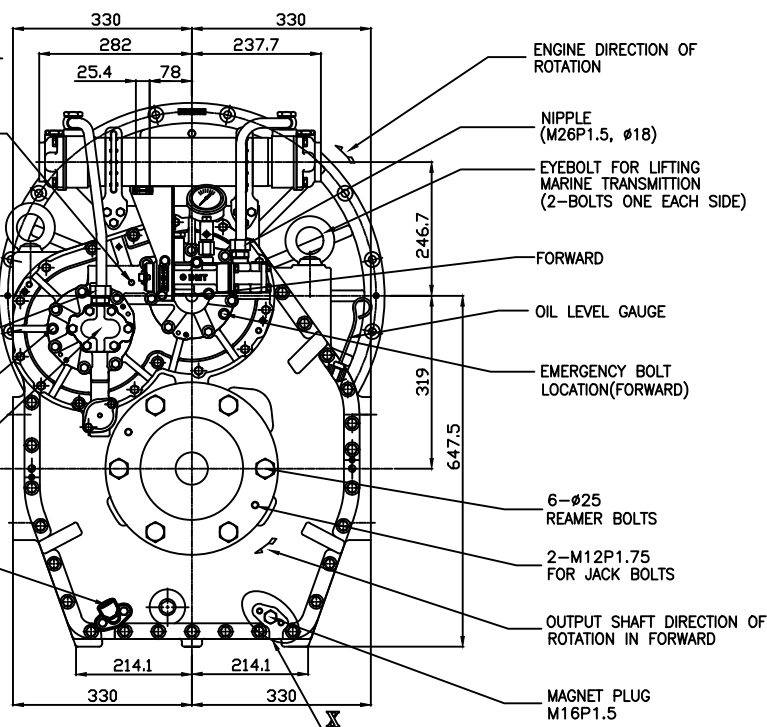
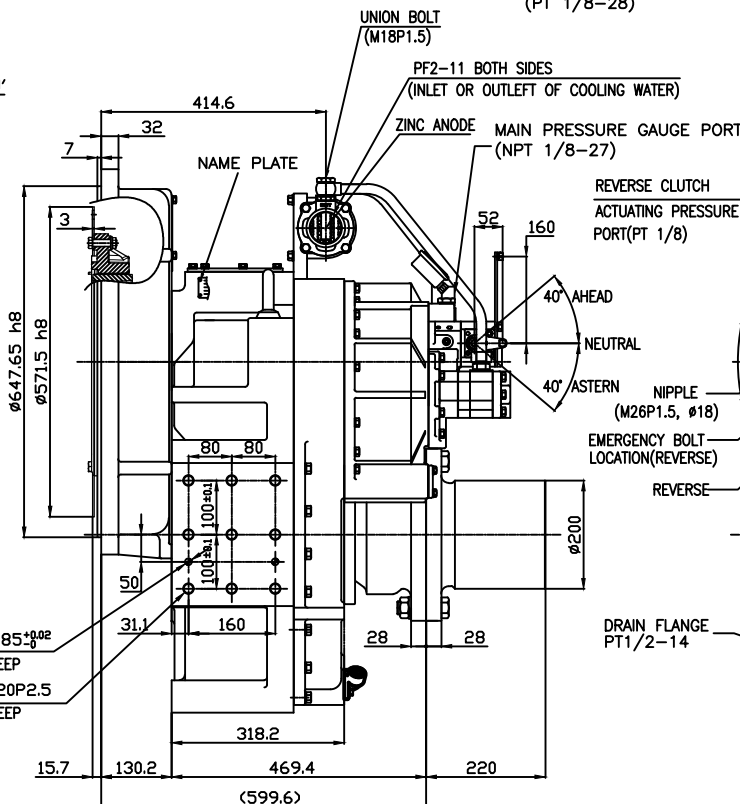
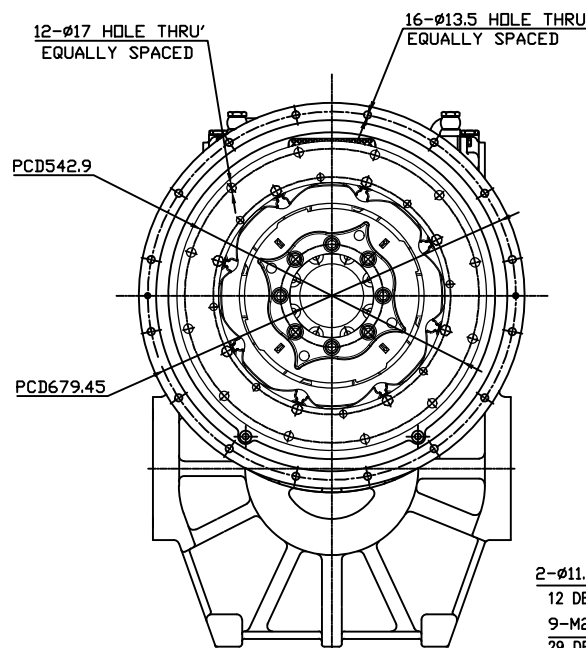


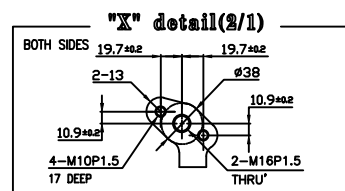
OUTPUT SHAFT COUPLING &  
PROPELLER COUPLING DIMENSION



DMT330DL MARINE TRANSMISSION SPECIFICATION			
GEAR RATIO	2.61, 3.10, 3.56, 4.13, 4.59		
TOTAL WEIGHT	APPROX. 807 Kg(DRY)		
OIL CAPACITY	APPROX. 17.5 L		
OIL VISCOSITY	SAE #30		
OIL PRESSURE	1.96 ~ 2.54 MPa	CLUTCH OIL	
DIRECTION OF ROTATION IN FORWARD	INPUT	C.C.W VIEWED FROM THE STERN	
	OUTPUT	C.W VIEWED FROM THE STERN	
OIL CHANGE INTERVAL	THE FIRST 100HOURS OF INITIAL OPERATION		
	AND EVERY 1000HOURS THEREAFTER		
SHIFTING LIMIT	UNDER 50% OF THE RATED ENGINE SPEED		
OIL COOLER	WATER FLOW 90 ~ 120L/m		
	TEMPERATURE OF COOLING WATER		MAX 32℃
OPERATING TORQUE OF SHIFTING LEVER		UNDER 2.94Nm	



BRACKET DIMENSION



- REMARK
1. HOUSING : SAE# 0
  2. DRIVING RING : SAE 18"
  3. COUPLING TYPE : CENTA Flex Coupling : 77268802

공용공차 TOLERANCE ON				부호 PART NO.		명 PART NAME		개수 Q'TY	재질 MATERIAL	구경 SIZE	비고 REMARKS			
분수 FRACTIONS		소수 DECIMALS		각도 ANGLES		재질 MATERIAL			형식 TYPE		원도 번호 ORIGINAL DWG. NO.			
± — ± — ± —						DATE 2018.06.08			SCALE 1/1					
원		구분		조금		중급		형식		APPROVED BY				
변		1호		4 이하		± 0.3		± 0.1		± 0.05		CHECKED BY		
공		4		16		± 0.5		± 0.2		± 0.07		DRAWN		
차		16		63		± 0.7		± 0.3		± 0.1		DESIGNED		
		63		250		± 1.2		± 0.5		± 0.2		TW. KIM		
		250		1000		± 2.0		± 0.8		± 0.3		DWG. NO.		
												33000GDLA~E-018CFR		
												기재 (REV.) 000		
												코드 번호 CODE ID. NO.		
												크기 SIZE A 0		
												D-I INDUSTRIAL		