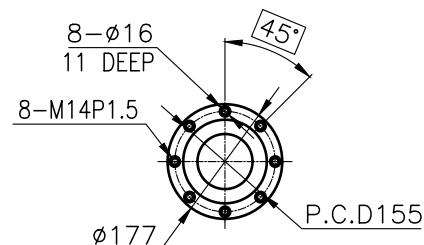
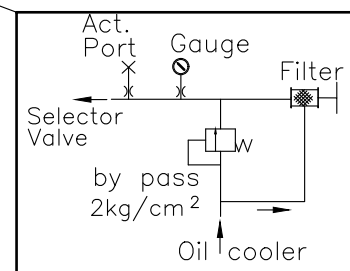
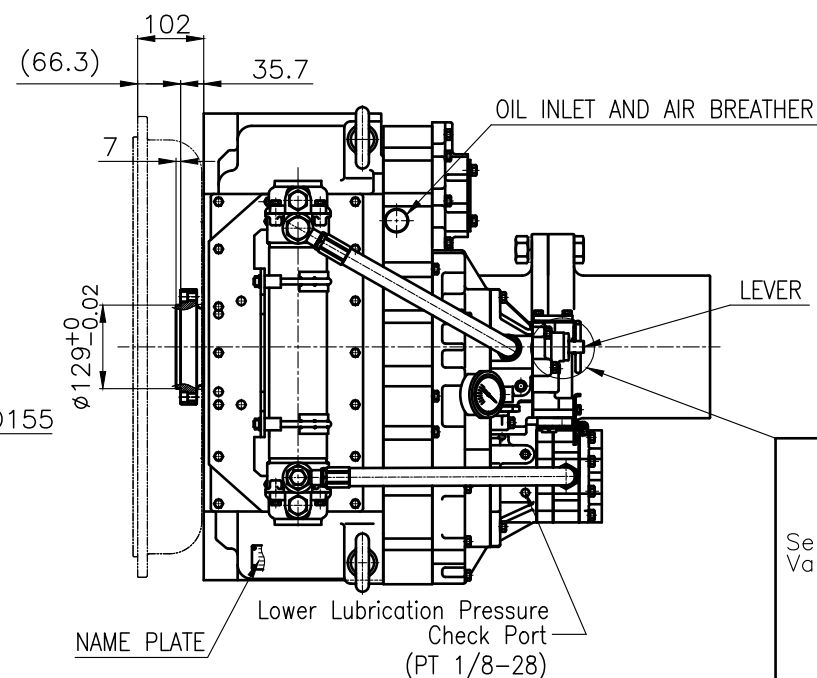


OUTPUT SHAFT COUPLING & PROPELLER COUPLING DIMENSION

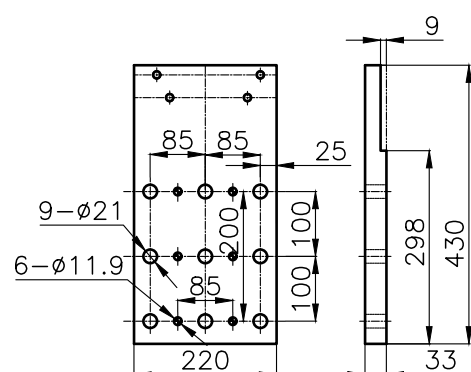
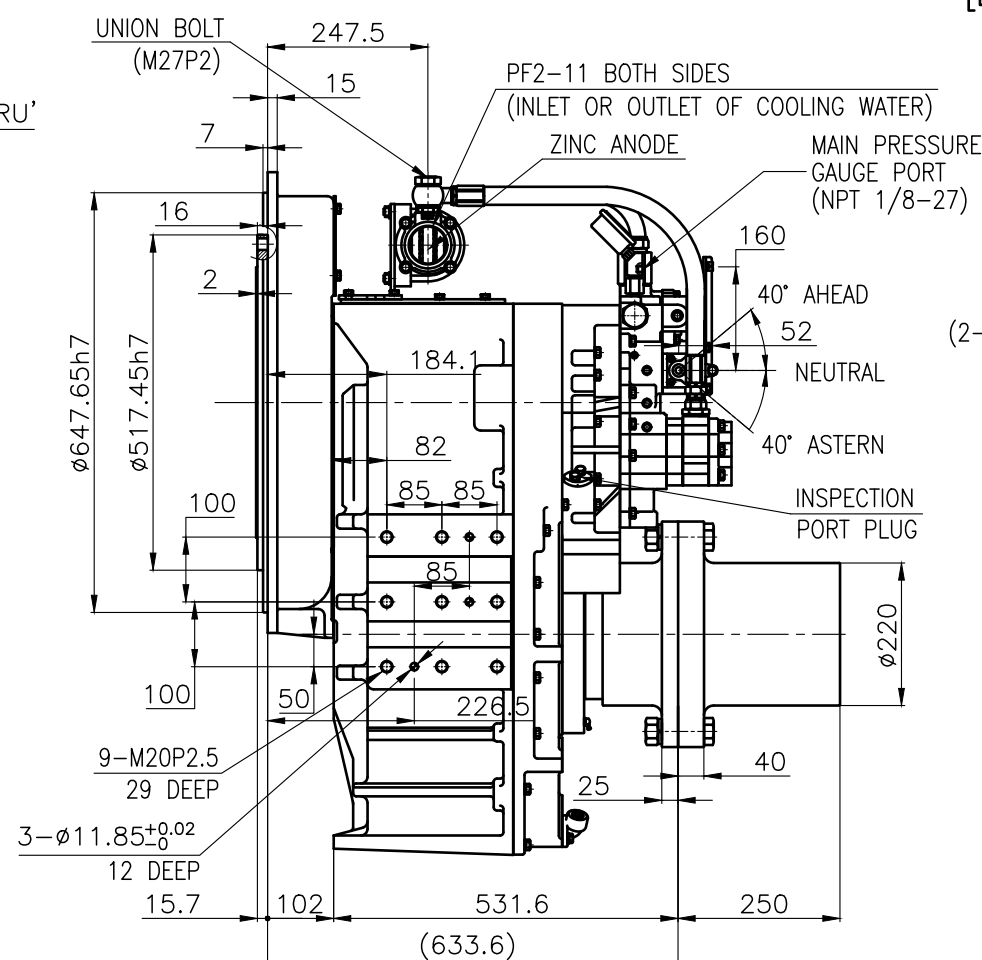
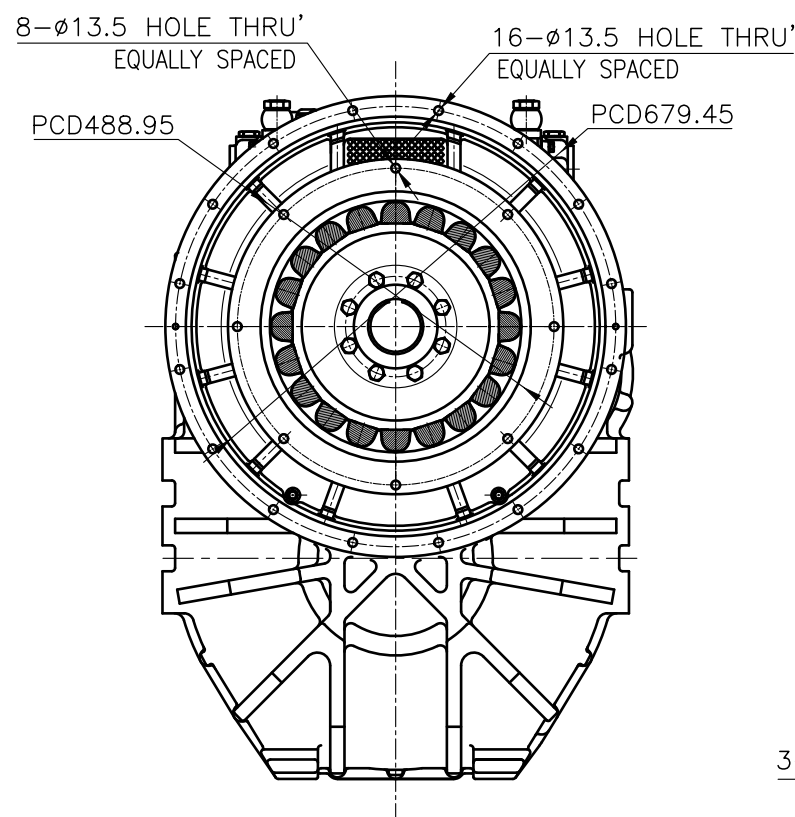


INPUT COUPLING DIMENSION

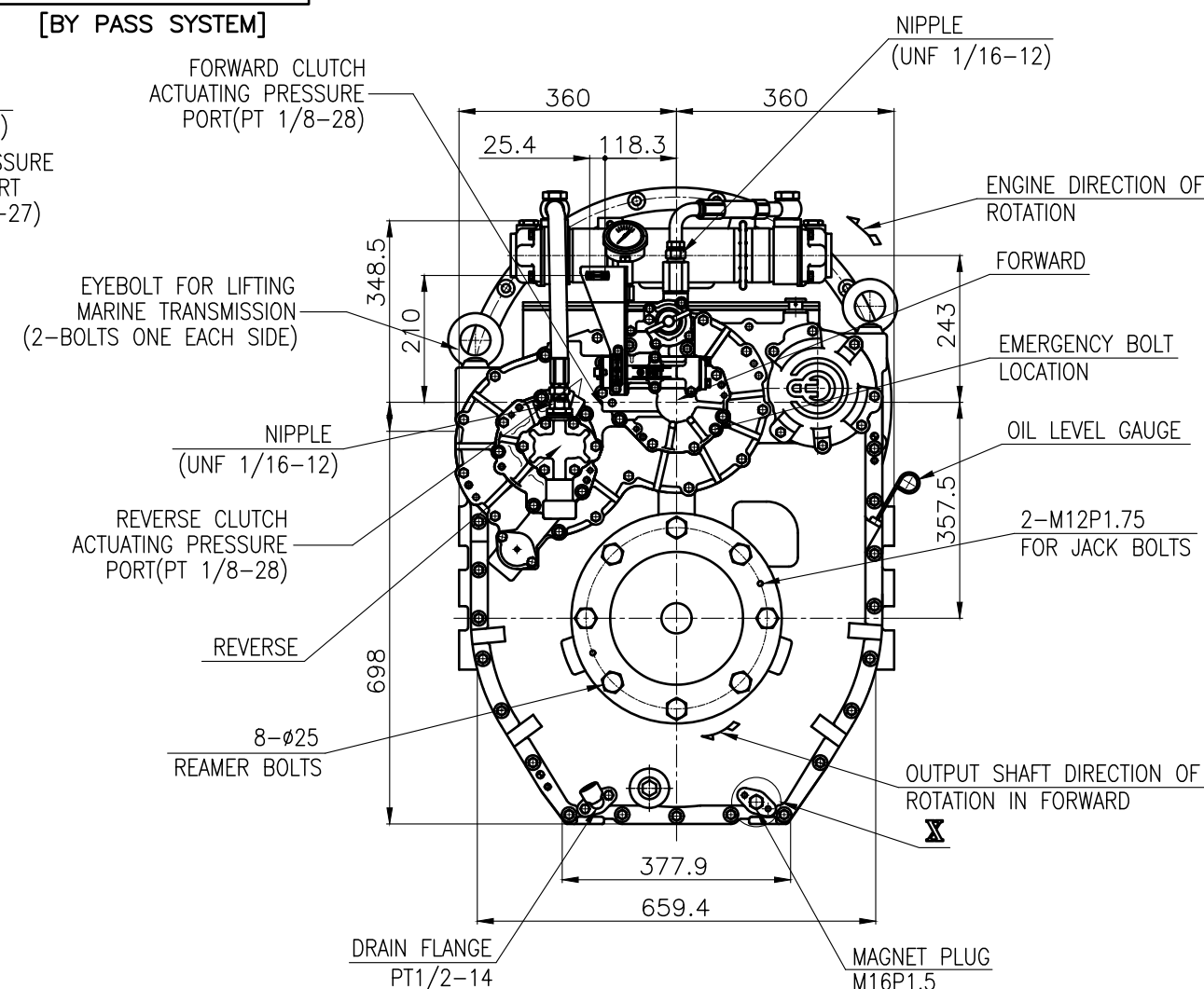
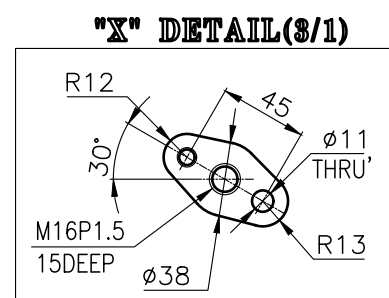


[BY PASS SYSTEM]

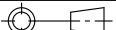
DMT460HL MARINE TRSANMISSION SPECIFICATION			
GEAR RATIO	3.02, 3.28, 3.56, 4.07, 4.48, 4.95		
TOTAL WEIGHT	APPROX. 978 Kg(DRY)		
OIL CAPACITY	APPROX. 18 L		
OIL VISCOSITY	SAE # 30		
OIL PRESSURE	1.96 ~ 2.54 MPa	CLUTCH OIL	
DIRECTION OF ROTATION IN FORWARD	INPUT	C.C.W VIEWED FROM THE STERN	
	OUTPUT	C.W VIEWED FROM THE STERN	
OIL CHANGE INTERVAL	THE FIRST 100HOURS OF INITIAL OPERATION		
	AND EVERY 1000HOURS THEREAFTER		
SHIFTING LIMIT	UNDER 50% OF THE RATED ENGINE SPEED		
OIL COOLER	WATER FLOW 90 ~ 120 L/min		
	TEMPERATURE OF COOLING WATER		MAX 32°
OPERATING TORQUE OF SHIFTING LEVER		UNDER 2.94Nm	



BRACKET DIMENSION



REMARK
1.HOUSING : SAE# 0
2.DRIVING RING : SAE 16"
3.COUPLING TYPE : RUBBER

공 동 공 차 TOLERANCE ON					번호 NO.		품 PART NO.		명 PART NAME		개 수 Q'TY		재 MATERIAL		규 SIZE		비 고 REMARKS			
분 수 소 수 각 도 FRACTIONS DECIMALS ANGLES ± — ± — ± —					재 MATERIAL						형 식 TYPE		DMT460HL		원 도 번 ORIGINAL DWG. NO.					
절삭가공 구 연 조 급 종 급 정 급 1 초 과 4 이 하 ± 0.3 ± 0.1 ± 0.05 4 16 ± 0.5 ± 0.2 ± 0.07 16 63 ± 0.7 ± 0.3 ± 0.1 63 250 ± 1.2 ± 0.5 ± 0.2 250 1000 ± 2.0 ± 0.8 ± 0.3							작성 DATE 2018.06.29		척 도 SCALE N/S		품 명 NAME		MARINE TRANSMISSION							
					승 인 APPROVED BY JK.Kim		검 도 CHECKED BY TH.Cha		재 도 DRAWN MA.Kim		설 계 DESIGNED		도 번 DWG. NO.		46000GHA~F-016RC		개정 (REV.) 000			
					D-I INDUSTRIAL						크 기 SIZE		A 3		코-드 번호 CODE ID. NO.					