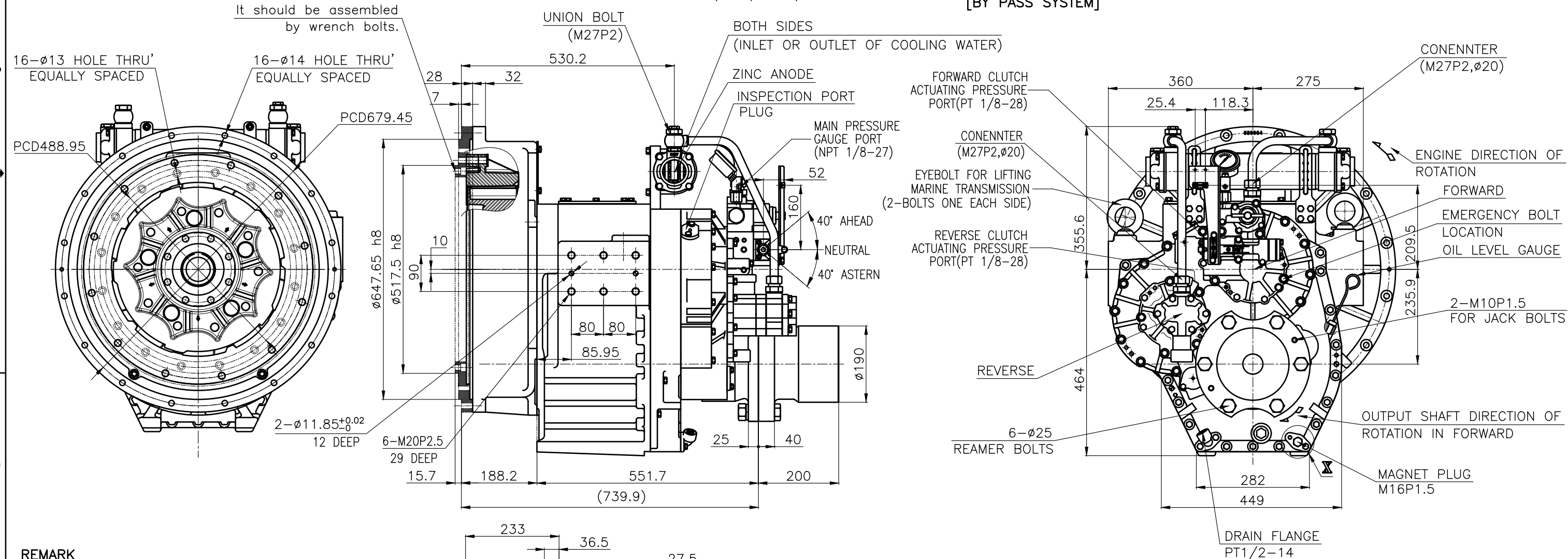
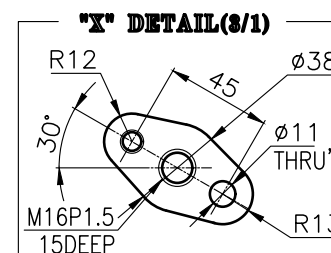
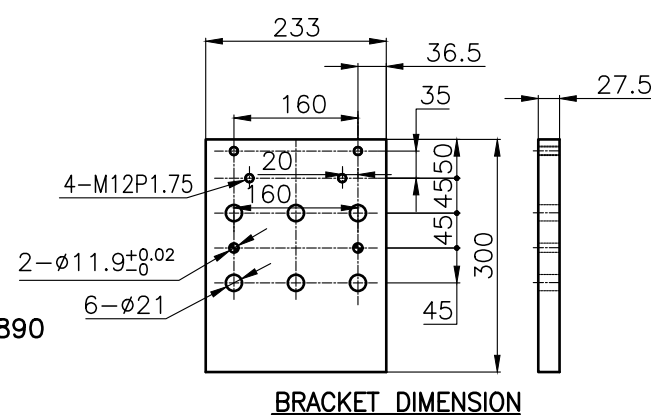



DMT550H MARINE TRANSMISSION SPECIFICATION			
GEAR RATIO	1.43, 1.64, 1.81, 2.03, 2.33, 2.60, 2.91		
TOTAL WEIGHT	APPROX. 660kg(DRY)		
OIL CAPACITY	APPROX. 9L		
OIL VISCOSITY	SAE #30		
OIL PRESSURE	1.96 ~ 2.54 MPa	CLUTCH OIL	
DIRECTION OF ROTATION IN FORWARD	INPUT	C.C.W VIEWED FROM THE STERN	
	OUTPUT	C.W VIEWED FROM THE STERN	
OIL CHANGE INTERVAL	THE FIRST 100HOURS OF INITIAL OPERATION		
	AND EVERY 1000HOURS THEREAFTER		
SHIFTING LIMIT	UNDER 50% OF THE RATED ENGINE SPEED		
OIL COOLER	WATER FLOW 90 ~ 120 L/m		
	TEMPERATURE OF COOLING WATER		MAX 32°C
OPERATING TORQUE OF SHIFTING LEVER		UNDER 2.94Nm	



REMARK

- 1.HOUSING : SAE# 0(550904)  
2.DRIVING RING : SAE 16"  
3.COUPLING TYPE  
-CENTA Flex Coupling : 77520802(18")  
-DUMMY(for CENTA FLEX COUPLING) : 77520890  
-DUMMY(for BELL HOUSING) : 550951



명 동 공 차 TOLERANCE ON					번호 NO.		품 PART NO.		명 PART NAME		개 수 Q'TY	재 질 MATERIAL	규 SIZE	비 고 REMARKS	
분 수 소 수 각 도 FRACTIONS DECIMALS ANGLES														원 도 번 ORIGINAL DWG. NO.	
± — ± — ± —															
일 반 면 차	절 차 가 공				재 질 MATERIAL					형 식 TYPE	DMT550H		원 도 번 ORIGINAL DWG. NO.		
						작 성 DATE 2018.06.29		척 도 SCALE N/S		품 명 NAME	MARINE TRANSMISSION				
						승 인 APPROVED BY	검 도 CHECKED BY	제 도 DRAWN	설 계 DESIGNED						
1 초 과 4 이 하 ± 0.3 ± 0.1 ± 0.05															
4 16 ± 0.5 ± 0.2 ± 0.07															
16 63 ± 0.7 ± 0.3 ± 0.1															
63 250 ± 1.2 ± 0.5 ± 0.2															
250 1000 ± 2.0 ± 0.8 ± 0.3															
					D-I INDUSTRIAL					크 기 SIZE	A 3	코 드 번 호 CODE ID. NO.	개정 (REV.) 000		