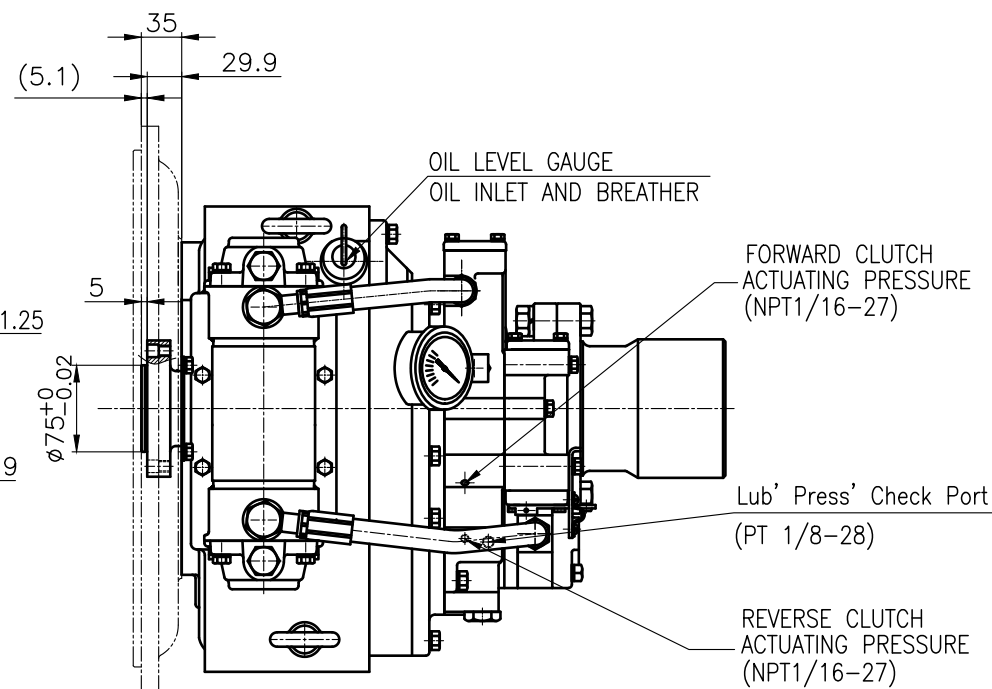
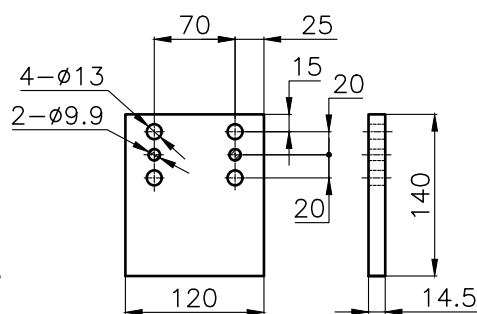
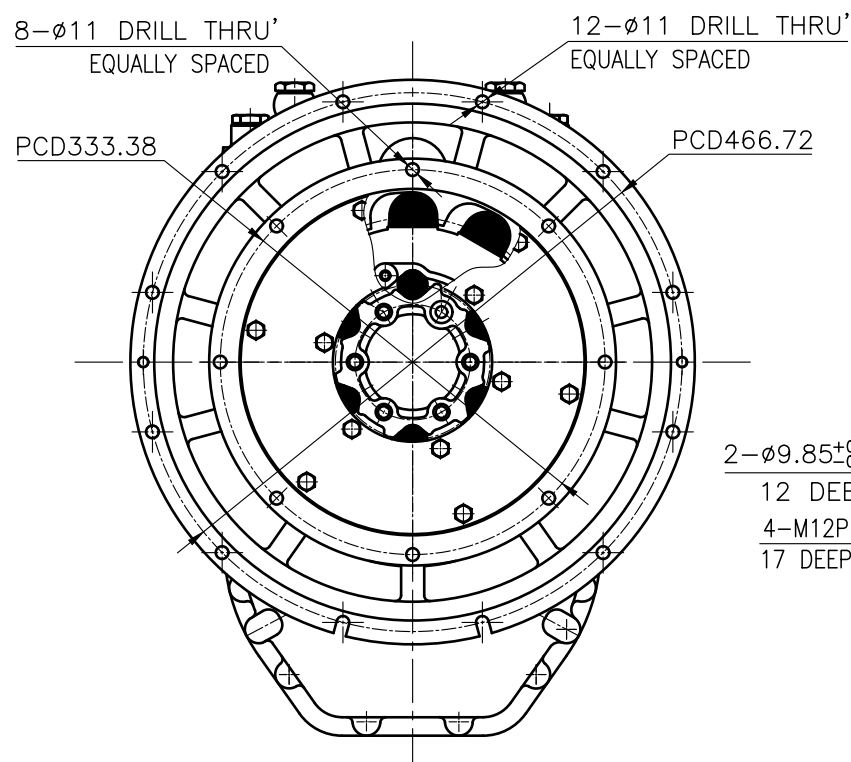


INPUT COUPLING DIMENSION



DMT90A MARINE TRANSMISSION SPECIFICATION			
GEAR RATIO	1.61, 2.06, 2.45, 2.82, 3.12, 3.46		
TOTAL WEIGHT	APPROX 159 kg(DRY)		
OIL CAPACITY	APPROX. 3.5 L		
OIL VISCOSITY	SAE # 30		
OIL PRESSURE	1.96 ~ 2.54 MPa	CLUTCH OIL	
DIRECTION OF ROTATION IN FORWARD	INPUT	C.C.W VIEWED FROM THE STERN	
	OUTPUT	C.W VIEWED FROM THE STERN	
OIL CHANGE INTERVAL	THE FIRST 100HOURS OF INITIAL OPERATION		
	AND EVERY 1000HOURS THEREAFTER		
SHIFTING LIMIT	UNDER 50% OF THE RATED ENGINE SPEED		
OIL COOLER	WATER FLOW 40 ~ 60 L/min		
	TEMPERATURE OF COOLING WATER	MAX 32 °C	
OPERATING TORQUE OF SHIFTING LEVER		UNDER 2.94Nm	



NAME PLATE

UNION BOLT (M18P1.5)

PF1 1/4-11 BOTH SIDERS (INLET OR OUTLET OF COOLING WATER)

ZINC ANODE

MAIN (NPT)

40° AHEAD

NEUTRAL

40° ASTERN

Ø444.6h8

Ø352.37h8

Ø2 P .5

106

7

15

12

20

60

20

65.5

70

52

160

Ø8

Ø120

20

20.5

258

35

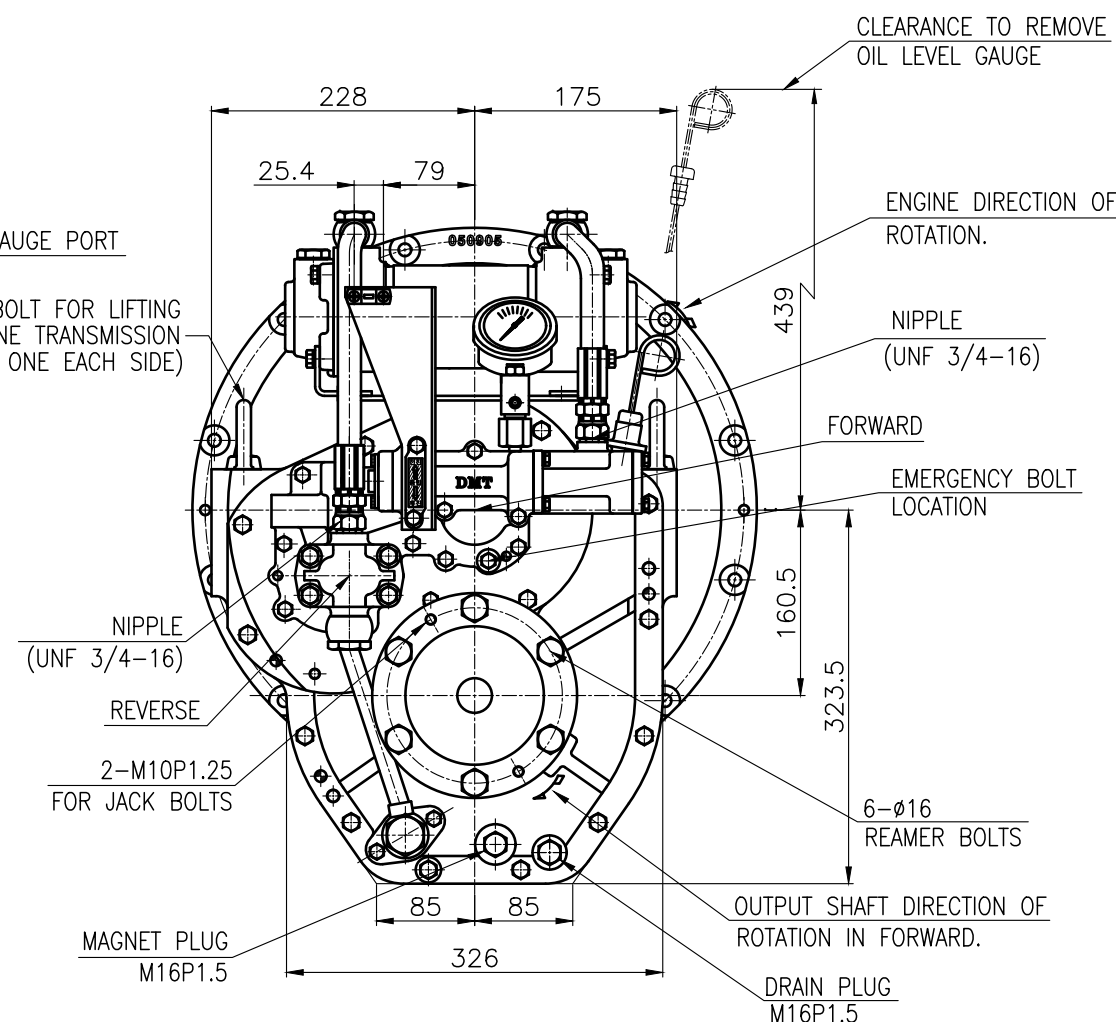
325

(360)

146

39.6

CLEARANCE TO REMOVE MAGNET PLUG



- 1.HOUSING: SAE#2
- 2.DRIVING RING: SAE 11.5"
- 3.COUPLING TYPE : DUAL STAGE
- 4.APPLICATION ENGINE : STANDARD

원형公差 TOLERANCE ON						번호 NO.		품번 PART NO.		품명 PART NAME		개수 Q'TY		재질 MATERIAL		구경 SIZE		비고 REMARKS			
분수 FRACTIONS		소수 DECIMALS		각도 ANGLES		제재 MATERIAL						형식 TYPE		DMT90A		원도 번호 ORIGINAL DWG. NO.					
± —		± —		± —		작성 DATE 2018.06.20 척도 SCALE N/S															
절삭가공						승인 APPROVED BY		검토 CHECKED BY		제도 DRAWN		설계 DESIGNED		품명 NAME		MARINE TRANSMISSION					
구경						JK.Kim		TH.Cha		BJ.Moon				도 번호 DWG. NO.		090000GA~F-2115DCH				개정(REV.) 000	
1 초과 4 이하 ± 0.3 ± 0.1 ± 0.05																					
4 16 ± 0.5 ± 0.2 ± 0.07																					
16 63 ± 0.7 ± 0.3 ± 0.1																					
63 250 ± 1.2 ± 0.5 ± 0.2																					
250 1000 ± 2.0 ± 0.8 ± 0.3																					
												크기 SIZE		A 3		코-드 번호 CODE ID. NO.					