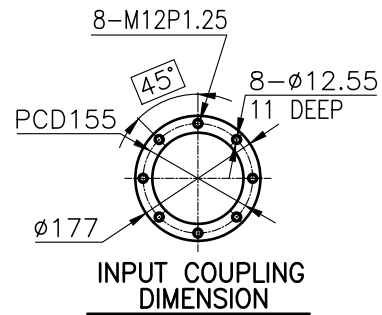
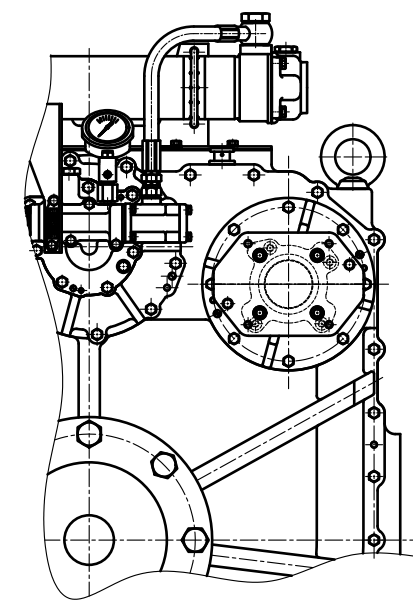
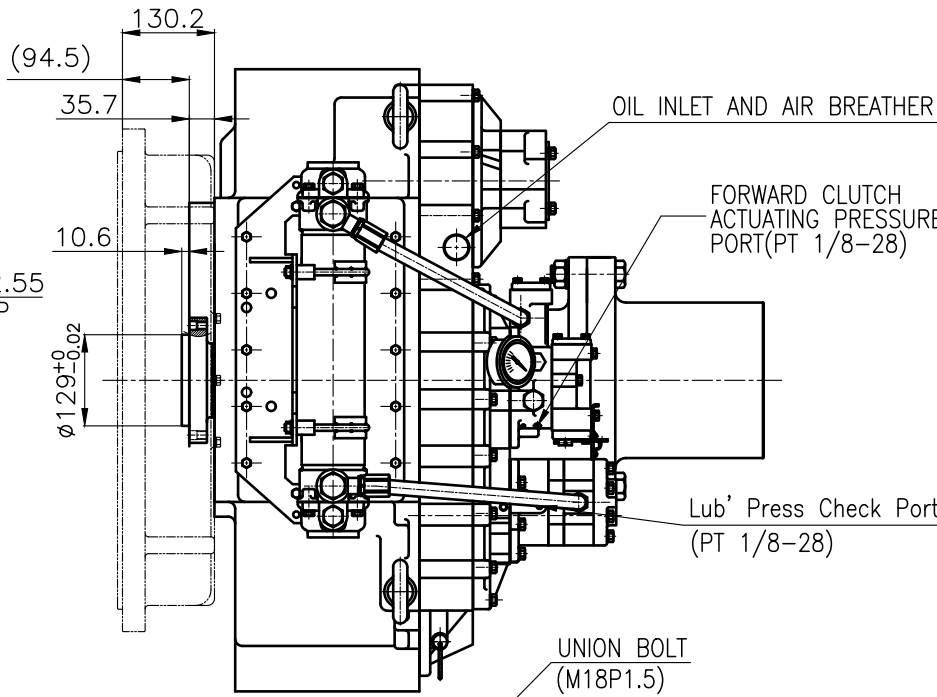


OUTPUT SHAFT COUPLING &
PROPELLER COUPLING DIMENSION

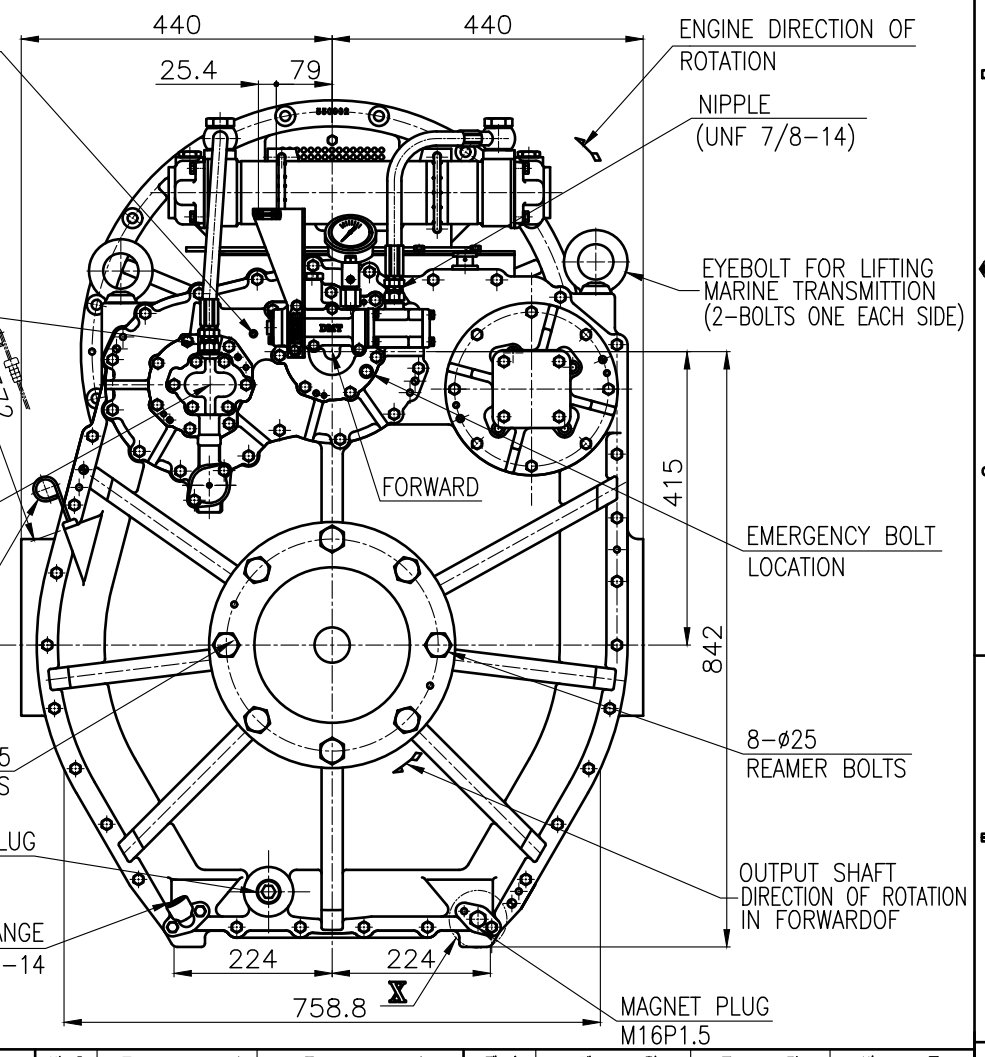
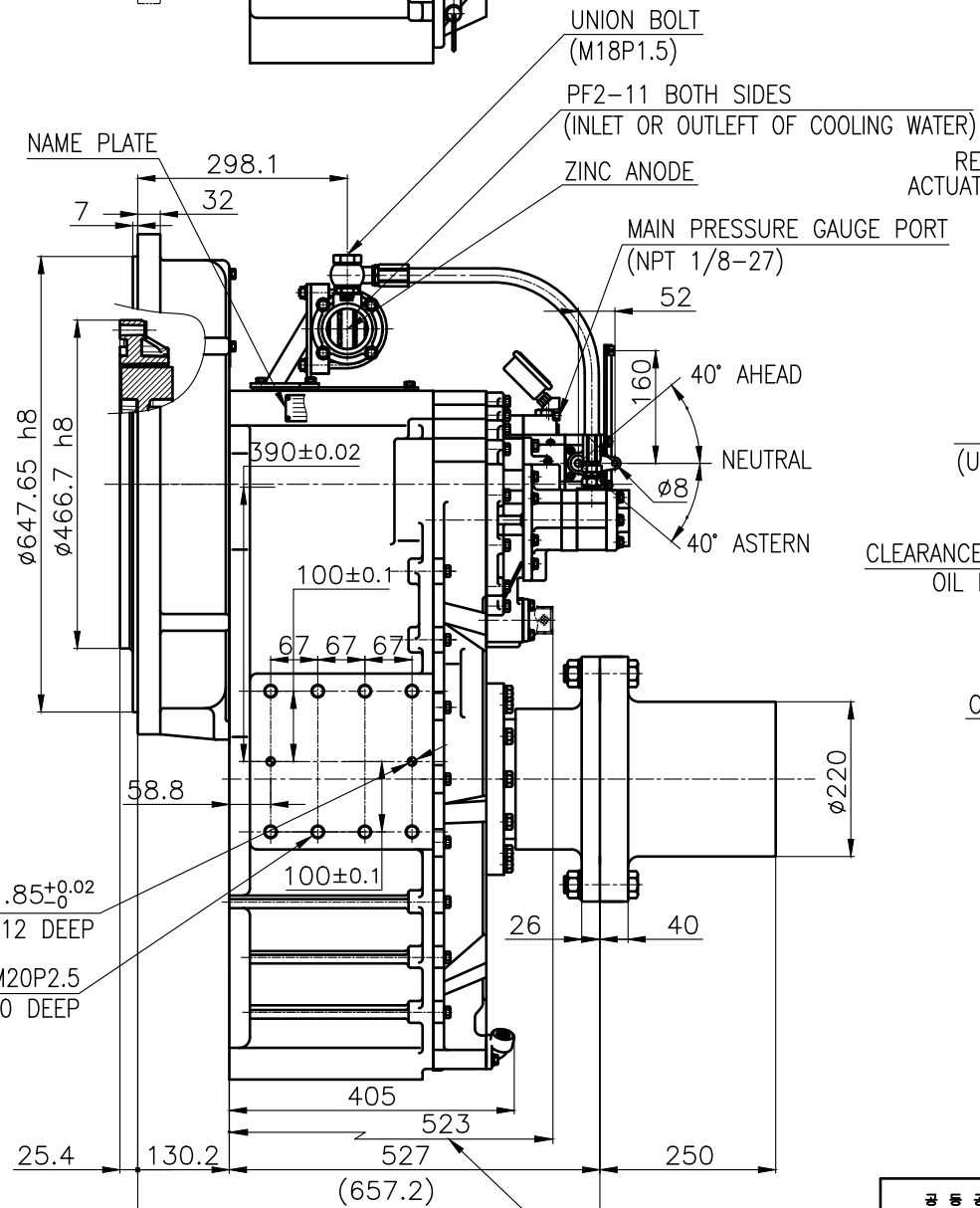
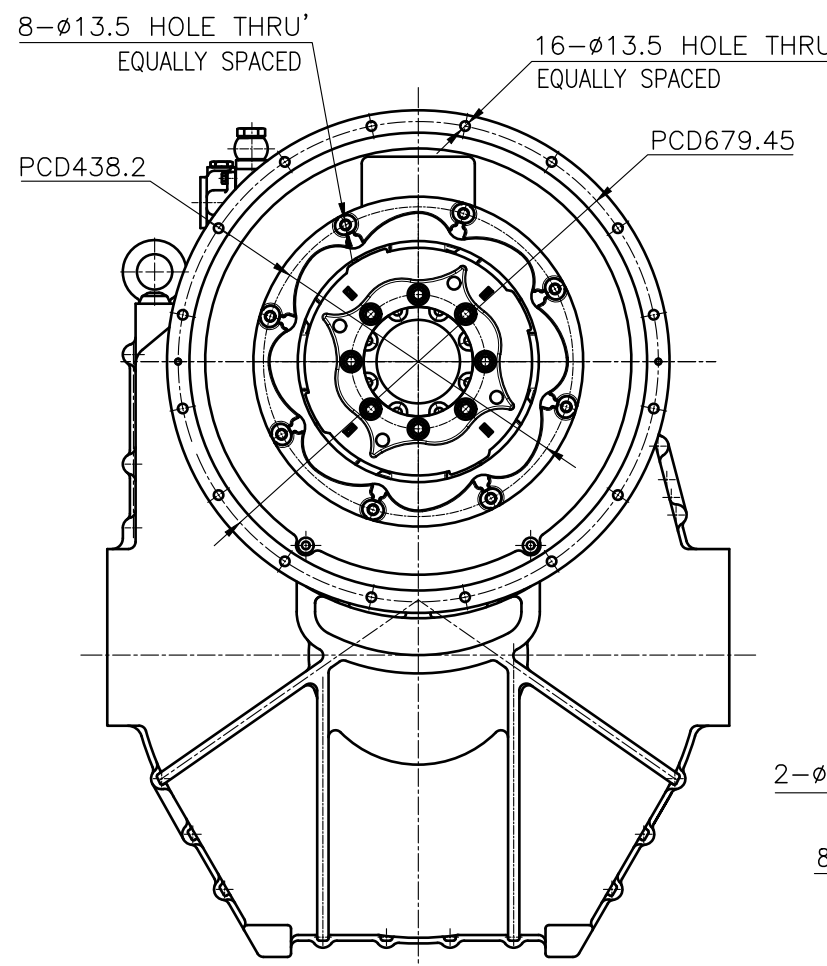


INPUT COUPLING
DIMENSION

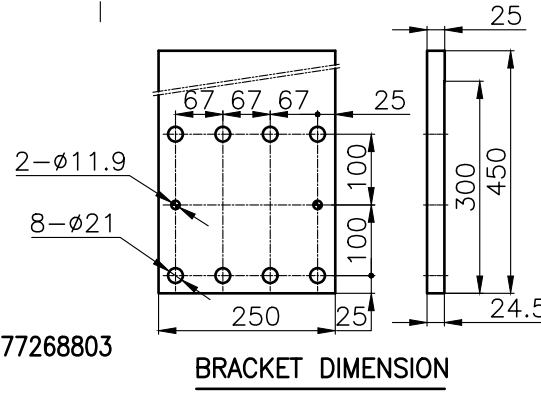


P.T.O ATTACHED

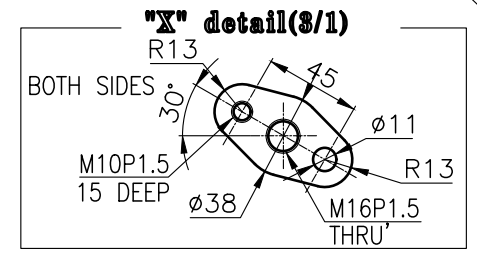
DMTP 6500 MARINE TRANSMISSION SPECIFICATION			
GEAR RATIO	5.11, 5.62, 5.91, 6.57, 6.95		
TOTAL WEIGHT	APPROX. 900 Kg(DRY)		
OIL CAPACITY	APPROX. 40 L		
OIL VISCOSITY	SAE # 30		
OIL PRESSURE	1.96 ~ 2.54 MPa		CLUTCH OIL
DIRECTION OF ROTATION IN FORWARD	INPUT	C.C.W VIEWED FROM THE STERN	
	OUTPUT	C.W VIEWED FROM THE STERN	
OIL CHANGE INTERVAL	THE FIRST 100HOURS OF INITIAL OPERATION		
	AND EVERY 1000HOURS THEREAFTER		
SHIFTING LIMIT	UNDER 50% OF THE RATED ENGINE SPEED		
OIL COOLER	WATER FLOW 40 ~ 60 L/m		
	TEMPERATURE OF COOLING WATER		MAX 32°
OPERATING TORQUE OF SHIFTING LEVER			UNDER 2.94Nm





REMARK
1.HOUSING: SAE#0
2.DRIVING RING: SAE 14"
3.COUPLING TYPE
-CENTA Flex Coupling : 77268803



BRACKET DIMENSION



공 통 공 차 TOLERANCE ON					번 호 NO.	부 품 PART NO.	부 품 PART 명		개 수 Q'TY	재 질 MATERIAL	규 격 SIZE	비 고 REMARKS	
분 수 FRACTIONS	소 수 DECIMALS	각 도 ANGLES			재 질 MATERIAL				형 식 TYPE	DMTP6500		원 도 번 ORIGINAL DWG. NO.	
± —	± —	± —				작성 DATE 2018.06.29	척 도 SCALE N/S		부 품 명 NAME	MARINE TRANSMISSION			
일	구 분	조 급	중 급	정 급	승 인 APPROVED BY	검 도 CHECKED BY	재 도 DRAWN	설 계 DESIGNED					
반	1 초 과 4 이 하	± 0.3	± 0.1	± 0.05	JK.Kim	TH.Cha	CH.Baek		도 DWG. NO.	65000GA~E-014CFR		개 정 (REV.) 000	
평	4 16	± 0.5	± 0.2	± 0.07									
면	16 63	± 0.7	± 0.3	± 0.1									
차	63 250	± 1.2	± 0.5	± 0.2									
	250 1000	± 2.0	± 0.8	± 0.3					크 기 SIZE	A 3	코 드 번 호 CODE ID. NO.		
					 D-I INDUSTRIAL								
													SHEET 1 OF 1